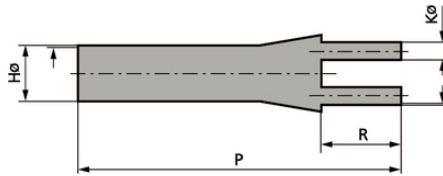


TEB

TEB 가



가

가

ETIM 5:

ETIM 5.0 Class-ID: EC001170
 ETIM 5.0 : / ()

ETIM 6:

ETIM 6.0 Class-ID: EC001170
 ETIM 6.0 Class : T ()

:

UV-

:

: > 2:1

:

가 가

:

(26.04.2024)

TEB

:

-55°C~+100 °C
: +120°C

1. +/- 10%; 2. +/- 20%

가 VAT 가 가 .

	Article description	/	H max. (mm)	H min. (mm)	K max. (mm)	K min. (mm)	P* mm	R* mm	/ PU
61830110	TEB 2-30/12	2	30	12	14	4	93	23	10
61830120	TEB2-60/23	2	60	23	25	7.5	118	29	1
61830130	TEB3-60/24	3	60	24	27	7	165	50	1
61830140	TEB4-40/15	4	40	15	13	3	105	26	1
61830150	TEB4-55/21	4	55	21	20	5.5	150	40	1
61830160	TEB4-75/26	4	75	26	28	7.5	175	45	1
61830170	TEB4-90/32	4	90	34	32	10	198	58	1

(26.04.2024)

©2024 Lapp Group - all rights reserved.

<http://lappkorea.lappgroup.com>

data sheet

PN 0456 / 02_03.16