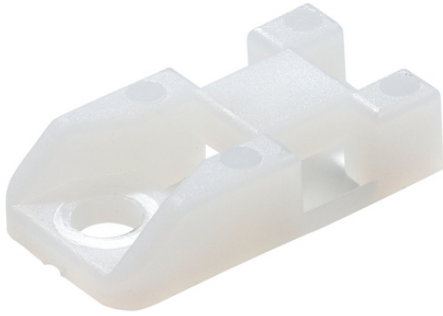
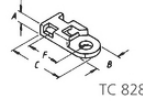


Tie screw socket

TC



mm	A	B	C	D	F
TC 826	5,7	13,0	24,0	2,0	12,3
TC 828	3,8	10,0	23,0	1,0	13,5



가

:

: E49405
UL 94 V-2

ETIM 5:

ETIM 5.0 Class-ID: EC000449
ETIM 5.0 :

ETIM 6:

ETIM 6.0 Class-ID: EC000449
ETIM 6.0 Class :

:

:

6.6

:

-40°C +85°C

(24.04.2024)



Tie screw socket

ABB / & .
가 VAT 가 가 .

(24.04.2024)

©2024 Lapp Group - all rights reserved.

<http://lappkorea.lappgroup.com>

data sheet

PN 0456 / 02_03.16



Tie screw socket

	Article description			(mm)	(mm)	(g/100)	/ PU
61724810	TC 826		PA 6.6	4.2	4.8	197	1000
61724820	TC 828		PA 6.6	4.2	4.8	40	1000

(24.04.2024)

©2024 Lapp Group - all rights reserved.

<http://lappkorea.lappgroup.com>

data sheet

PN 0456 / 02_03.16