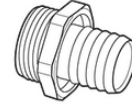


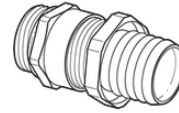
SILVYN® SI

SILVYN® SI -

PVC



SILVYN® SSV/SSV-M + SCH
IP 54



SILVYN®
SSVZ/SSVZ-M + SCH
IP 54



SILVYN® SCH



가

가

PVC

ETIM 5:

ETIM 5.0 Class-ID: EC001177

ETIM 5.0 Class :

ETIM 6:

ETIM 6.0 Class-ID: EC001177

ETIM 6.0 Class :

(24.04.2024)

©2024 Lapp Group - all rights reserved.

<http://lappkorea.lappgroup.com>

data sheet

PN 0456 / 02_03.16



SILVYN® SI

:	:
:	: 25 kV/mm
:	: 23 N/mm ²
:	Shore A : 75°C ~ 90°C
:	(RAL 7001)
:	PVC
:	-5°C ~ +80°C

가 VAT 가 가 .

(24.04.2024)



SILVYN® SI

	ID x OD mm	SILVYN® SSV-M/SSVZ-M	SILVYN® SSV/SSVZ	SILVYN® SCH	PU ring (m)
SILVYN® SI					
61713210	7.0 x 9.0	12/1 / -	-	10 - 16 S	50
61713240	9.0 x 12.0	12/2 / -	-	10 - 16 S	50
61713270	11.0 x 14.0	16/1 / -	-	10 - 16 S	50
61713300	13.0 x 16.0	16/2 / -	-	12 - 20 S	50
61713330	14.0 x 18.0	20/1	-	12 - 20 S	50
61713360	18.0 x 22.0	20/3	13,5/1	16 - 25 S	50
61713390	23.0 x 28.0	25	21	20 - 32 S	50
61713420	32.0 x 38.0	32 / 32/2	29/2	32 - 50 S	50