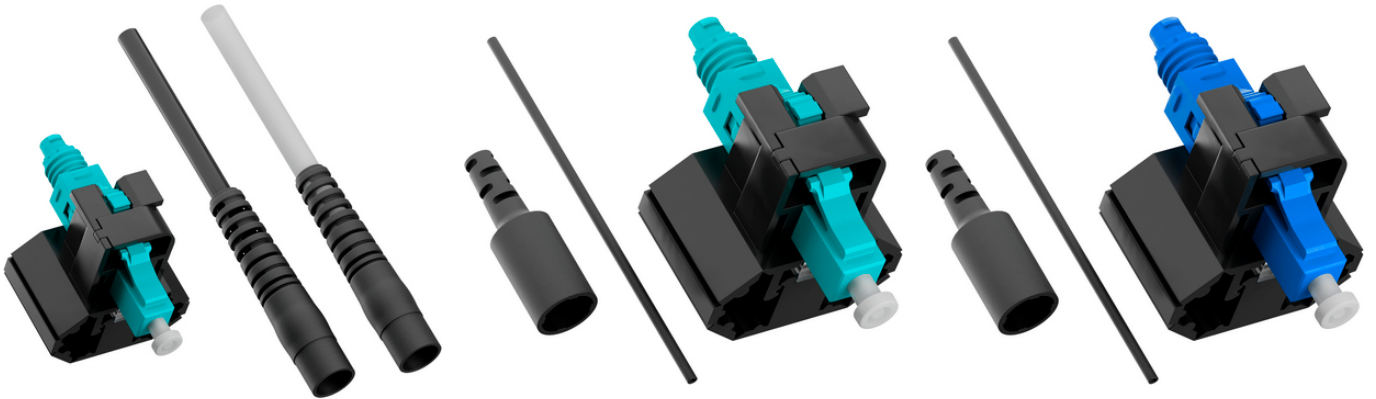


## EPIC® DATA FFC-LC assembly accessories

Spare components for EPIC® DATA FFC-LC starter kit, for easy termination of FFC-LC connectors

Spare components for EPIC® DATA FFC-LC starter kit, for easy termination of FFC-LC connectors



Assembly accessories as useful equipment for easy assembly of Fibre Fast Connect LC connectors for GOF optical fibers  
Cable assembly kit for the secure insertion of the fibre into the connector and simplified attachment of strain relief through lateral fixation of the aramid strain relief elements

Fibre guide for safe insertion of the optical fibre into the connector and for attaching the strain relief by manually fixing the aramid strain relief elements

Precise marking of stripping dimensions on the fibre using markings on the fibre guide

For field assembly of Fibre Fast Connect LC connectors for GOF optical fibres

Suitable as replacement components for EPIC® DATA FFC-LC starter kit

ETIM 5:

ETIM 5.0 Class-ID: EC001122

ETIM 5.0 Class-Description:

ETIM 6:

ETIM 6.0 Class-ID: EC001122

ETIM 6.0 Class : LWL

가 VAT 가 가 .

(24.04.2024)

©2024 Lapp Group - all rights reserved.

<http://lappkorea.lappgroup.com>

data sheet

PN 0456 / 02\_03.16



## EPIC® DATA FFC-LC assembly accessories

38115785	FFC-LC-FASER-GUIDE
38115783	FFC-LC-KABELASSEMBLIERUNG-SET

(24.04.2024)

©2024 Lapp Group - all rights reserved.

<http://lappkorea.lappgroup.com>

data sheet

PN 0456 / 02\_03.16

## EPIC® DATA FFC-LC assembly accessories

