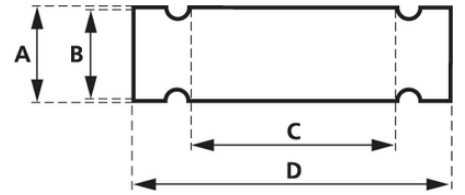
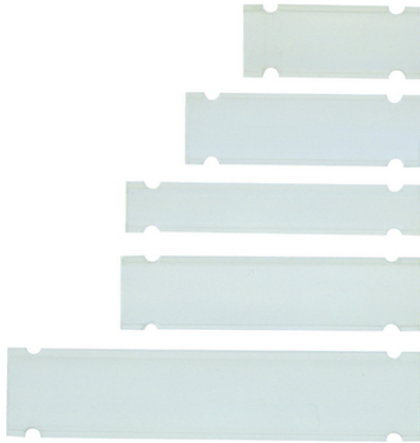


FLEXIMARK® PTEF/ CAB

FLEXIMARK®

PTFE

FLEXIMARK® PTEF 9,5-35(: M32511)



PC LFL

가

:-

- FLEXIMARK® Flexilabels LFL, MINI

, DYMO®

/
2.6mm

PTEF()CAB: (135x2,6mm)

(24.04.2024)

©2024 Lapp Group - all rights reserved.

<http://lappkorea.lappgroup.com>

data sheet

PN 0456 / 02_03.16



FLEXIMARK® PTEF/ CAB

ETIM 5:

ETIM 5.0 Class-ID: EC002248

ETIM 5.0 Class :

ETIM 6:

ETIM 6.0 Class-ID: EC002248

ETIM 6.0 Class :

:

:

-75°C

+80°C

가 VAT
FLEXIMARK®

가 가 .

.) LCK 32

640

640

1

PU

(24.04.2024)



FLEXIMARK® PTEF/ CAB

		A (mm)	B (mm)	C (mm)	D (mm)	PU	PU
83254974	FLEXIMARK® PTEF 6-35 TR	8.7	6	35	47	50	1
83254960	FLEXIMARK® PTEF 9.5-18 TR	12.2	9.5	18	30	50	1
83254961	FLEXIMARK® PTEF 9.5-28 TR	12.2	9.5	28	40	50	1
83254963	FLEXIMARK® PTEF 9.5-35 TR	12.2	9.5	35	47	50	1
83254962	FLEXIMARK® PTEF 9.5-38 TR	12.2	9.5	38	50	50	1
83254964	FLEXIMARK® PTEF 9.5-58 TR	12.2	9.5	58	70	50	1
83254965	FLEXIMARK® PTEF 9.5-70 TR	12.2	9.5	70	82	50	1
83280006	FLEXIMARK® PTEF 12-18 TR	14.8	12	18	30	50	1
83254976	FLEXIMARK® PTEF 12-28 TR	14.8	12	28	40	50	1
83254977	FLEXIMARK® PTEF 12-38 TR	14.8	12	38	50	50	1
83254978	FLEXIMARK® PTEF 12-58 TR	14.8	12	58	70	50	1
83254982	FLEXIMARK® PTEF 19-50 TR	21.7	19	50	62	50	1
83259091	FLEXIMARK® CAB 6-35 TR	8.7	6	35	47	50	1
83259087	FLEXIMARK® CAB 9.5-18 TR	12.2	9.5	18	30	50	1
83259084	FLEXIMARK® CAB 9.5-28 TR	12.2	9.5	28	40	50	1
83259088	FLEXIMARK® CAB 9.5-35 TR	12.2	9.5	35	47	50	1
83259086	FLEXIMARK® CAB 9.5-58 TR	12.2	9.5	58	70	50	1
83259078	FLEXIMARK® CAB 12-18 TR	14.8	12	18	30	50	1
83259079	FLEXIMARK® CAB 12-28 TR	14.8	12	28	40	50	1

(24.04.2024)

©2024 Lapp Group - all rights reserved.

<http://lappkorea.lappgroup.com>

data sheet

PN 0456 / 02_03_16



FLEXIMARK® PTEF/ CAB

		A (mm)	B (mm)	C (mm)	D (mm)	PU	PU
83259080	FLEXIMARK® CAB 12-38 TR	14.8	12	38	50	50	1
83259081	FLEXIMARK® CAB 12-58 TR	14.8	12	58	70	50	1
83259070	FLEXIMARK® CAB 19-50 TR	21.7	19	50	62	50	1

(24.04.2024)

©2024 Lapp Group - all rights reserved.

<http://lappkorea.lappgroup.com>

data sheet

PN 0456 / 02_03.16