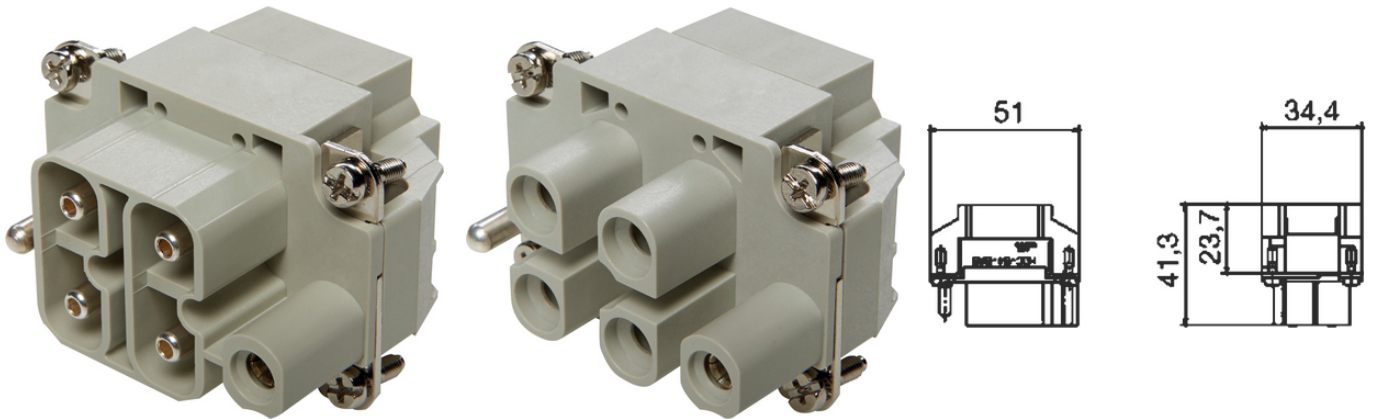


Power H-S



ETIM 5:

ETIM 5.0 Class-ID: EC000438

ETIM 5.0 class :

ETIM 6:

ETIM 6.0 Class-ID: EC000438

ETIM 6.0 Class-Description: Contact insert for industrial connectors

(V):

IEC: 1000 V AC/DC

UL: 600 V AC/DC

:

8 kV

(23.08.2024)

©2024 Lapp Group - all rights reserved.

<http://lappkorea.lappgroup.com>

data sheet

PN 0456 / 02_03.16

Power H-S

(A):	IEC: 40 A
	UL: 85 A
	CSA: 44 A
:	3
:	UL94 V-0
:	< 1 mOhm
/ :	4 + PE
:	2,5 mm ² - 6 mm ² (AWG 14 - 11)
(mm):	8
:	PC,
:	500
:	-40°C ... +125°C

가 VAT 가 가 .

(23.08.2024)



Power H-S

	Article description	Contact type		Packaging unit
H-S				
10407910	H-S 4+2xPE SAS		4 + PE	10
10407900	H-S 4+2xPE BAS		4 + PE	10

(23.08.2024)

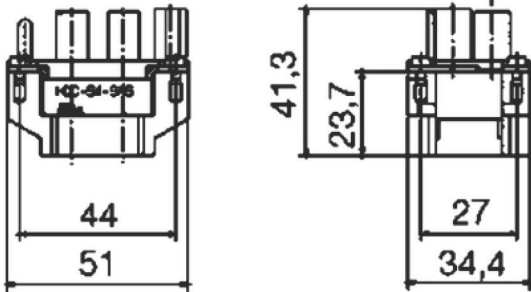
©2024 Lapp Group - all rights reserved.

<http://lappkorea.lappgroup.com>

data sheet

PN 0456 / 02_03.16

Power H-S



(23.08.2024)

©2024 Lapp Group - all rights reserved.
<http://lappkorea.lappgroup.com>

data sheet

PN 0456 / 02_03.16