

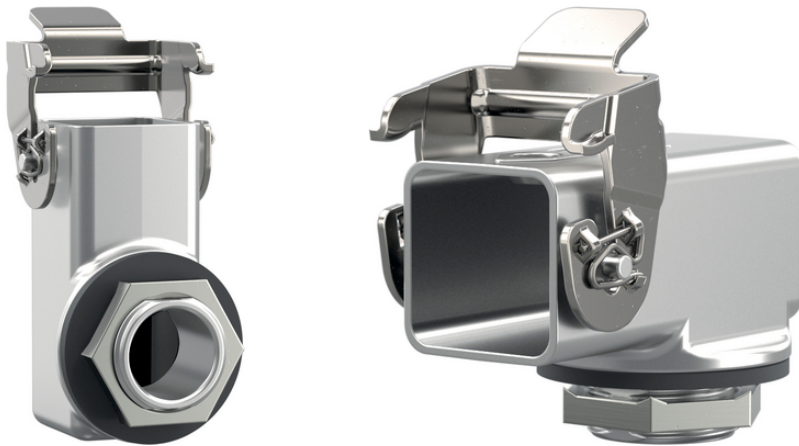
EPIC® ULTRA H-A 3 EGS

The robust and reliable built in housing as EMC version

EPIC® EMC , , UL50E, Nema250

EMC

Made in Germany



Lapp



(12.07.2024)

©2024 Lapp Group - all rights reserved.

<http://lappkorea.lappgroup.com>

data sheet

PN 0456 / 02_03.16

EPIC® ULTRA H-A 3 EGS



The EPIC® ULTRA H-A 3 range comprises the smallest EMC housings in the heavy-duty industrial connector sector and ensures safe plug connections in a small amount of space.
 The built-in housing is mateable by many commercially available hood housings.
 The arrow as a new design element on the surface of the housing is easy to feel and simplifies plugging in spatially confined and possibly poorly visible application areas.
 With straight cable entry for orderly cable routing and to prevent excessive bending of the cable.
 Simple mounting on the enclosure by screwing in and fixing with locknut.

To protect the connector insert from environmental influences.
 Especially for environments where the product is getting into contact with water, cleaning agents and saline substances.
 Especially for environments where electromagnetic compatibility (EMC) is required.
 For use with many EPIC® rectangular connector inserts.

Withstands high environmental and mechanical stresses.

Screw mounted housing M20, angled, with one cable entry
 IEC 68-2-52, 2 , NSS, 480
 DIN EN ISO 9227 ,
 DIN EN 6988 -

ETIM 5:	ETIM 5.0 Class-ID: EC000437
	ETIM 5.0 class :
ETIM 6:	ETIM 6.0 Class-ID: EC000437
	ETIM 6.0 Class-Description: Housing for industrial connectors
:	:
	:
	: NBR
가:	IP 66 / IP 68 1 meter / 10 hours (locked)
	NEMA 250, UL50E: 12, 4, 4X (latched)
VDE- :	UL: in preparation
	VDE: in preparation
:	-40°C to +100°C, short-term up to +125°C

가 VAT 가 가 .

(12.07.2024)



EPIC® ULTRA H-A 3 EGS

	Article description	M	Packaging unit
10423640	EPIC ULTRA H-A 3 EGS M20	20	10

(12.07.2024)

©2024 Lapp Group - all rights reserved.

<http://lappkorea.lappgroup.com>

data sheet

PN 0456 / 02_03.16