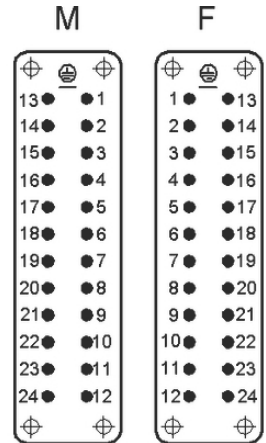
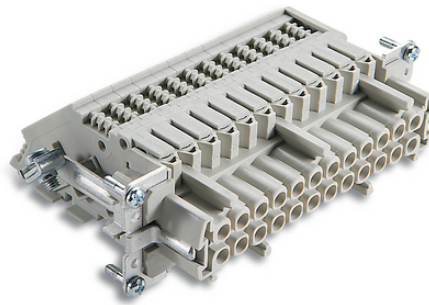
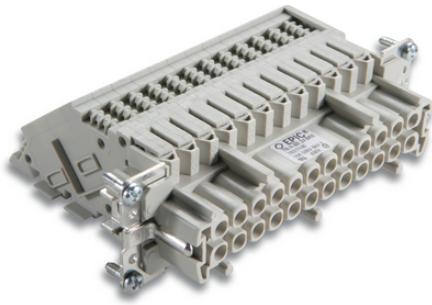


EPIC® TB-H-BE 24

H-BE



H-BE " " 가 H-BE 가 , PE "1" "top"

ETIM 5:

ETIM 5.0 Class-ID: EC000438

ETIM 5.0 class :

ETIM 6:

ETIM 6.0 Class-ID: EC000438

ETIM 6.0 Class-Description: Contact insert for industrial connectors

(V):

IEC: 500 VUL: 600 VCSA: 600 V

:

6 kV

(A):

IEC: 16 A

UL: 16 A

CSA: 16 A

:

3

:

24 + PE

/ :

(20.07.2024)

©2024 Lapp Group - all rights reserved.

<http://lappkorea.lappgroup.com>

data sheet

PN 0456 / 02_03.16

EPIC® TB-H-BE 24

: : 0.5 - 4.0 mm²

(mm): 13

: 200

VDE- : UL- :

UL : E75770

: -40°C to +100°C, short-term up to +125°C

가 VAT 가 가 .



EPIC® TB-H-BE 24

	Article description	Contact type		Packaging unit
24-				
70317100	TB-H-BE 24 BRE		1 - 24	10
70316100	TB-H-BE 24 BLI		1 - 24	10

(20.07.2024)

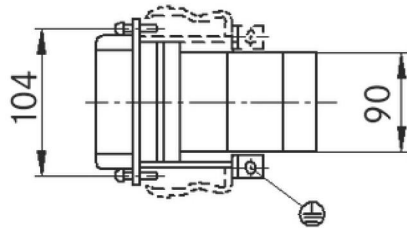
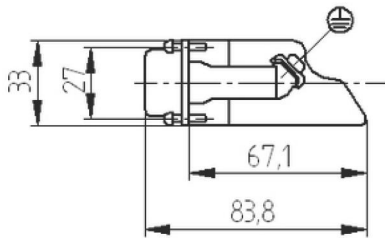
©2024 Lapp Group - all rights reserved.

<http://lappkorea.lappgroup.com>

data sheet

PN 0456 / 02_03.16

EPIC® TB-H-BE 24



(20.07.2024)

©2024 Lapp Group - all rights reserved.
<http://lappkorea.lappgroup.com>

data sheet

PN 0456 / 02_03.16