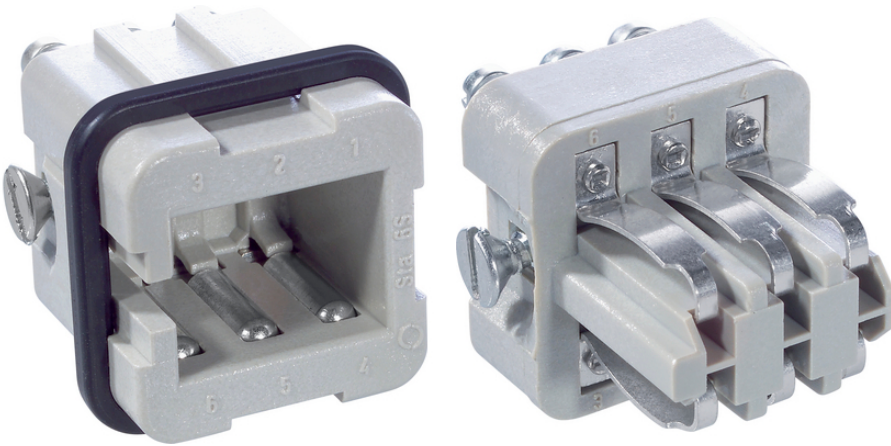


EPIC® STA 6 Solder termination

가 STA

-40 ~ +80

Made in Germany



가 STA

ETIM 5:

ETIM 5.0 Class-ID: EC000438  
ETIM 5.0 class :

ETIM 6:

ETIM 6.0 Class-ID: EC000438  
ETIM 6.0 Class-Description: Contact insert for industrial connectors

(V):

IEC: 24 V AC, 60 V DC  
UL: 48 V  
CSA: 48 V

(A):

IEC: 10 A  
UL: 10 A  
CSA: 10 A

(12.07.2024)



# EPIC® STA 6 Solder termination

:	2
:	< 3 mOhm
:	,
/ :	6
:	: 1.5 mm <sup>2</sup>
(mm):	5
:	100
VDE- :	UL- :
:	UL : E75770
:	-40°C up to +80°C

가 VAT 가 가 .

(12.07.2024)



## EPIC® STA 6 Solder termination

	Article description	Contact type		Packaging unit
STA 6 solder				
10485200	STA 6 SL		1 - 6	10
10487200	STA 6 FL		1 - 6	10

(12.07.2024)

©2024 Lapp Group - all rights reserved.

<http://lappkorea.lappgroup.com>

data sheet

PN 0456 / 02\_03.16