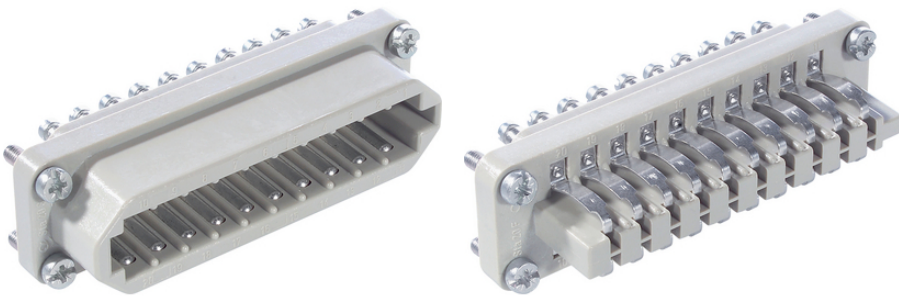


EPIC® STA 20 Screw termination

가 STA

20

Made in Germany



가 STA

ETIM 5:

ETIM 5.0 Class-ID: EC000438

ETIM 5.0 class :

ETIM 6:

ETIM 6.0 Class-ID: EC000438

ETIM 6.0 Class-Description: Contact insert for industrial connectors

(V):

IEC: 24 V AC, 60 V DC

UL: 48 V

CSA: 48 V

(A):

IEC: 7 A

UL: 7 A

CSA: 7 A

(20.07.2024)

©2024 Lapp Group - all rights reserved.

<http://lappkorea.lappgroup.com>

data sheet

PN 0456 / 02_03.16



EPIC® STA 20 Screw termination

:	2
:	< 3 mOhm
:	,
/ :	20
:	: 0.5 - 1.5 mm ²
(mm):	5
:	100
VDE- :	UL- :
:	UL : E75770
:	-40°C up to +80°C

가 VAT 가 가 .

(20.07.2024)



EPIC® STA 20 Screw termination

	Article description	Contact type		Packaging unit
STA 20				
10501100	STA 20 SS		1 - 20	5
10503100	STA 20 FS		1 - 20	5

(20.07.2024)

©2024 Lapp Group - all rights reserved.

<http://lappkorea.lappgroup.com>

data sheet

PN 0456 / 02_03.16