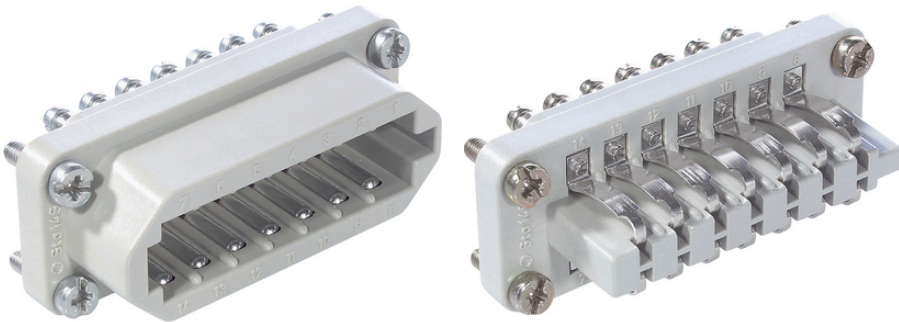


EPIC® STA 14 Screw termination

가 STA

Made in Germany



가 STA

ETIM 5:

ETIM 5.0 Class-ID: EC000438

ETIM 5.0 class :

ETIM 6:

ETIM 6.0 Class-ID: EC000438

ETIM 6.0 Class-Description: Contact insert for industrial connectors

(V):

IEC: 24 V AC, 60 V DC

UL: 48 V

CSA: 48 V

(A):

IEC: 7.5 A

UL: 7.5 A

CSA: 7.5 A

(22.07.2024)

©2024 Lapp Group - all rights reserved.

<http://lappkorea.lappgroup.com>

data sheet

PN 0456 / 02_03.16



EPIC® STA 14 Screw termination

| | |
|--------|-----------------------------|
| : | 2 |
| : | < 3 mOhm |
| : | , |
| / : | 14 |
| : | : 0.5 - 1.5 mm ² |
| (mm): | 5 |
| : | 100 |
| VDE- : | UL- : |
| : | UL : E75770 |
| : | -40°C up to +80°C |

가 VAT 가 가 .

(22.07.2024)



EPIC® STA 14 Screw termination

| | Article description | Contact type | | Packaging unit |
|----------|---------------------|--------------|--------|----------------|
| STA 14 | | | | |
| 10491100 | STA 14 SS | | 1 - 14 | 5 |
| 10493100 | STA 14 FS | | 1 - 14 | 5 |

(22.07.2024)

©2024 Lapp Group - all rights reserved.

<http://lappkorea.lappgroup.com>

data sheet

PN 0456 / 02_03.16