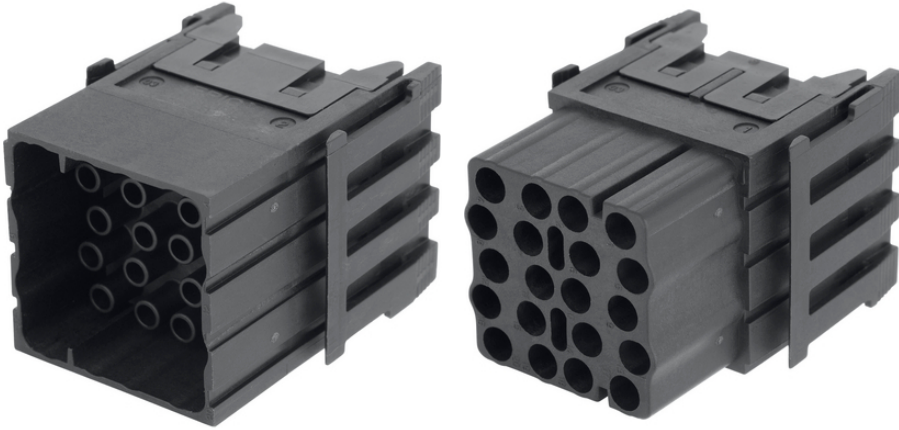


EPIC® MH 20

High flexibility by the use of any combination of modules in one connector

가
20



Lapp



20

Crimp connection for permanent vibration proof contacting
EPIC® MH 가

1

Railway applications

- Fire protection on railway vehicles: Test according EN 45545-2. Requirement sets R22 and R23. Hazard level HL1, HL2 and HL3

(24.07.2024)

©2024 Lapp Group - all rights reserved.

<http://lappkorea.lappgroup.com>

data sheet

PN 0456 / 02_03.16

EPIC® MH 20

/

ETIM 5:	ETIM 5.0 Class-ID: EC002641
	ETIM 5.0 : ()
ETIM 6:	ETIM 6.0 Class-ID: EC002641
	ETIM 6.0 Class : ()
(V):	500
:	6 kV
(A):	16 A
:	3
:	UL94 V-0
:	< 5 mOhm
/ :	20
:	: 0.14 ~ 4.0 mm ²
:	,
:	500
:	UL- :
:	UL : E75770
:	-40°C +125°C

가 VAT 가 가 .

(24.07.2024)



EPIC® MH 20

	Article description	Contact type		Slots	Packaging unit
44423226	EPIC® MHS 20 CM		20	2	10
44423227	EPIC® MHB 20 CM		20	2	10

(24.07.2024)

©2024 Lapp Group - all rights reserved.

<http://lappkorea.lappgroup.com>

data sheet

PN 0456 / 02_03.16