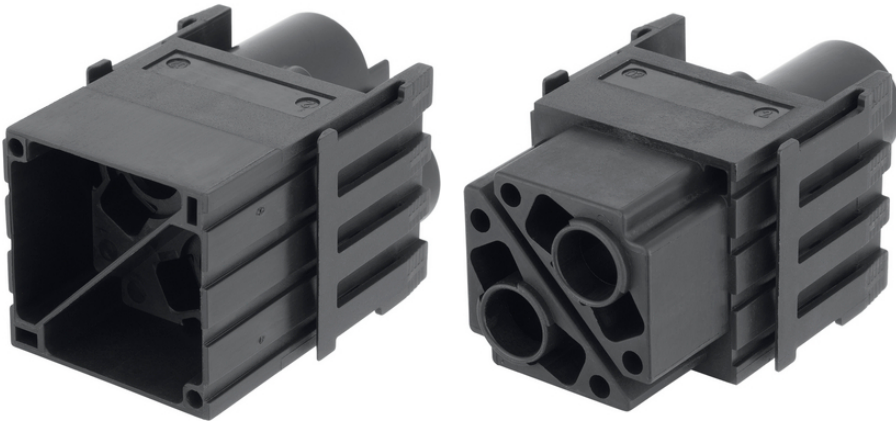


# EPIC® MH 2 100A

2

가

2



Lapp



2

Crimp connection for permanent vibration proof contacting  
EPIC® MH 가

1

Railway applications

- Fire protection on railway vehicles: Test according EN 45545-2. Requirement sets R22 and R23. Hazard level HL1, HL2 and HL3

(22.07.2024)

©2024 Lapp Group - all rights reserved.

<http://lappkorea.lappgroup.com>

data sheet

PN 0456 / 02\_03.16

# EPIC® MH 2 100A

/

ETIM 5:	ETIM 5.0 Class-ID: EC002641
	ETIM 5.0 : ( )
ETIM 6:	ETIM 6.0 Class-ID: EC002641
	ETIM 6.0 Class : ( )
(V):	1000V
:	8 kV
(A):	100 A
:	3
:	UL94 V-0
:	< 5 mOhm
/ :	2
:	Crimp termination: 0.75 mm <sup>2</sup> ... 4.0 mm <sup>2</sup>
:	,
:	500
:	UL- :
:	UL : E75770
:	-40°C +125°C

가 VAT 가 가 .

(22.07.2024)



# EPIC® MH 2 100A

	Article description	Contact type		Slots	Packaging unit
44423212	EPIC® MHS 2 CM 100A		2	2	10
44423213	EPIC® MHB 2 CM		2	2	10

(22.07.2024)

©2024 Lapp Group - all rights reserved.

<http://lappkorea.lappgroup.com>

data sheet

PN 0456 / 02\_03.16