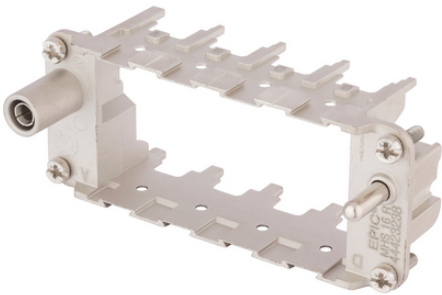


EPIC® MH 16 multi frame

가



EPIC® MH

가

1

Railway applications

- Fire protection on railway vehicles: Test according EN 45545-2. Requirement sets R22 and R23. Hazard level HL1, HL2 and HL3

PE 1mm² ~ 6mm², , 10mm²

(20.07.2024)

©2024 Lapp Group - all rights reserved.

<http://lappkorea.lappgroup.com>

data sheet

PN 0456 / 02_03.16



EPIC® MH 16 multi frame

/

ETIM 5:

ETIM 5.0 Class-ID: EC002641

ETIM 5.0 : ()

ETIM 6:

ETIM 6.0 Class-ID: EC002641

ETIM 6.0 Class : ()

:

:

500

:

-40°C

+125°C

가 VAT 가 가 .

(20.07.2024)

©2024 Lapp Group - all rights reserved.

<http://lappkorea.lappgroup.com>

data sheet

PN 0456 / 02_03.16



EPIC® MH 16 multi frame

	Article description	Contact type	Slots	Packaging unit
44423238	EPIC® MHS 16 R (A, B, C, D)		4	10
44423239	EPIC® MHB 16 R (a, b, c, d)		4	10

(20.07.2024)

©2024 Lapp Group - all rights reserved.

<http://lappkorea.lappgroup.com>

data sheet

PN 0456 / 02_03.16