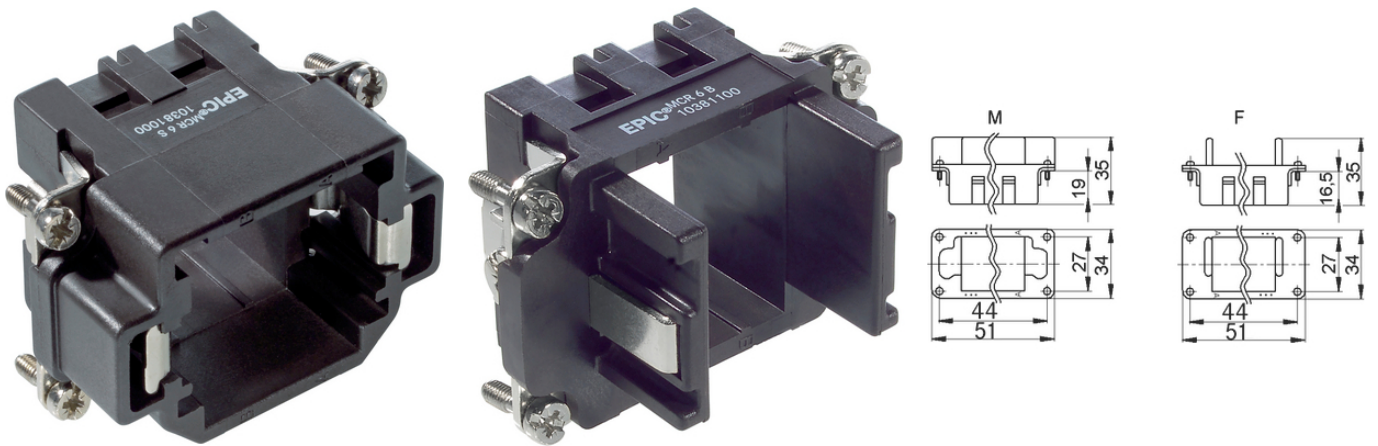


EPIC® MCR 6

The mixed assembly guarantees high flexibility. For applications in machine and plant engineering, for robotics and slide-in technology.

가



1

The MCR " " ; " "

ETIM 5:

ETIM 5.0 Class-ID: EC002310

ETIM 5.0 class :

ETIM 6:

ETIM 6.0 Class-ID: EC002310

ETIM 6.0 Class-Description: Fixing frame industrial connectors

VDE- :

: VDE-REG. A870

UL- :

(24.04.2024)

©2024 Lapp Group - all rights reserved.

<http://lappkorea.lappgroup.com>

data sheet

PN 0456 / 02_03.16



EPIC® MCR 6

UL : E75770

가 VAT 가 가 .

(24.04.2024)



EPIC® MCR 6

	Article	Slots	Version	/ PU
MCR 6				
10381000	MCR 6 S	2		5
10381100	MCR 6 B	2		5

(24.04.2024)

©2024 Lapp Group - all rights reserved.

<http://lappkorea.lappgroup.com>

data sheet

PN 0456 / 02_03.16