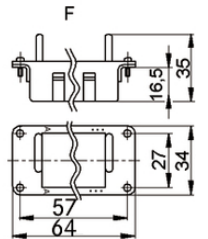
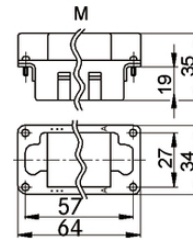
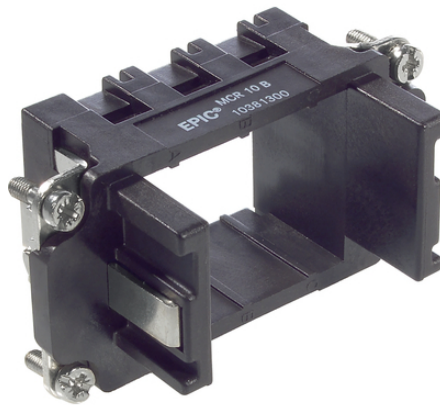
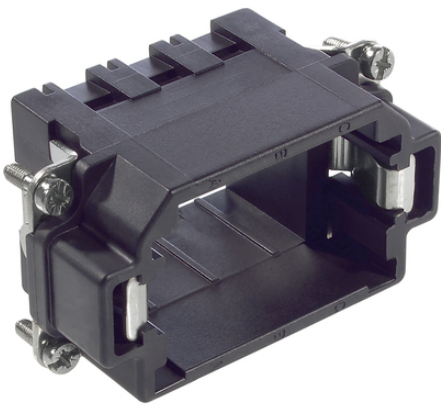


EPIC® MCR 10

가



Kompletterande automationskomponenter från Lapp

1

The MCR " " ; " "

ETIM 5:

ETIM 5.0 Class-ID: EC002310

ETIM 5.0 class :

ETIM 6:

ETIM 6.0 Class-ID: EC002310

ETIM 6.0 Class-Description: Fixing frame industrial connectors

VDE- :

: VDE-REG. A870

UL- :

UL : E75770

(24.04.2024)

©2024 Lapp Group - all rights reserved.

<http://lappkorea.lappgroup.com>

data sheet

PN 0456 / 02_03.16



EPIC® MCR 10

가 VAT 가 가 .

(24.04.2024)



EPIC® MCR 10

| | Article | Slots | Version |
|----------|----------|-------|---------|
| MCR 10 | | | |
| 10381200 | MCR 10 S | 3 | |
| 10381300 | MCR 10 B | 3 | |

(24.04.2024)

©2024 Lapp Group - all rights reserved.

<http://lappkorea.lappgroup.com>

data sheet

PN 0456 / 02_03.16