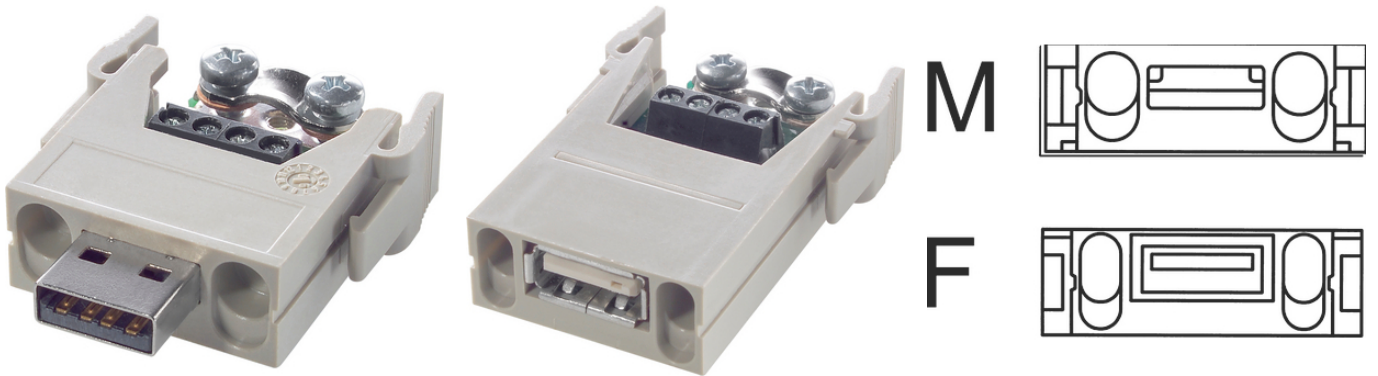


EPIC® MC Module: Universal Bus

The mixed assembly guarantees high flexibility. For applications in machine and plant engineering, for robotics and slide-in technology.

가



Lapp

1

ETIM 5:

ETIM 5.0 Class-ID: EC002641

ETIM 5.0 : ()

ETIM 6:

ETIM 6.0 Class-ID: EC002641

ETIM 6.0 Class : ()

(V):

30 V

(A):

1 A

:

3

:

,

(20.07.2024)

©2024 Lapp Group - all rights reserved.

<http://lappkorea.lappgroup.com>

data sheet

PN 0456 / 02_03.16



EPIC® MC Module: Universal Bus

/ : 4 +
: : 0.08 - 1.5 mm²
:
: 100
: -20 °C ... +85 °C

가 VAT 가 가 .

(20.07.2024)



EPIC® MC Module: Universal Bus

	Article description	Contact type		Slots	Packaging unit
:	BUS				
10390600	EPIC® MCS 4 SS		4 +	1	5
10390700	EPIC® MCS 4 BS		4 +	1	5

(20.07.2024)

©2024 Lapp Group - all rights reserved.

<http://lappkorea.lappgroup.com>

data sheet

PN 0456 / 02_03.16