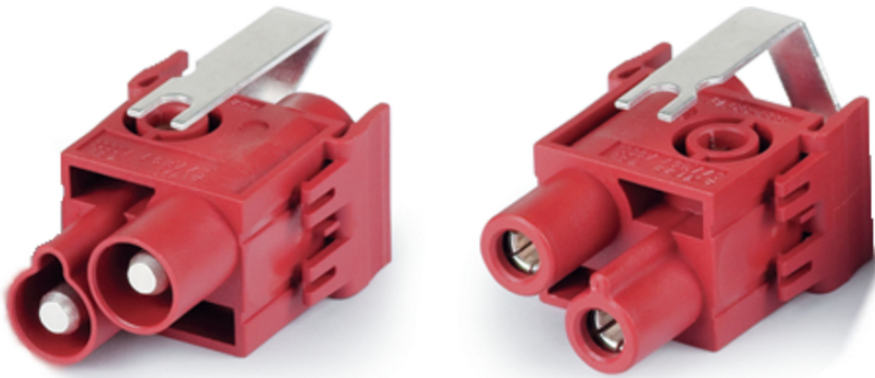


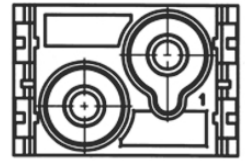
EPIC® MC module: HC1+PE

The mixed assembly guarantees high flexibility. For applications in machine and plant engineering, for robotics and slide-in technology.

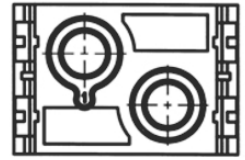
가



M



F



1

25mm²

ETIM 5:

ETIM 5.0 Class-ID: EC002641

ETIM 5.0 : ()

ETIM 6:

ETIM 6.0 Class-ID: EC002641

(24.04.2024)

©2024 Lapp Group - all rights reserved.

<http://lappkorea.lappgroup.com>

data sheet

PN 0456 / 02_03.16

EPIC® MC module: HC1+PE

	ETIM 6.0 Class	:	()
(V):	IEC: 1000 V		
	UL: 600 V		
	CSA: 600 V		
(A):	82 A		
:	3		
:	< 2 mOhm		
:			
/ :	1 + PE		
:		:	10 - 25 mm ²
(mm):	15		
:	100		
VDE- :		:	VDE-REG. A870
	UL-	:	
	UL	:	E75770
:			-40°C to +100°C, short-term up to +125°C

가 VAT 가 가 .

(24.04.2024)



EPIC® MC module: HC1+PE

	Article description	Contact type		Slots	/ PU
:	1 +PE				
10344600	MCS-HC 1+PE		1 + PE	2	5
10345600	MCB-HC 1+PE		1 + PE	2	5

(24.04.2024)

©2024 Lapp Group - all rights reserved.

<http://lappkorea.lappgroup.com>

data sheet

PN 0456 / 02_03.16