

EPIC® MC BUS

The mixed assembly guarantees high flexibility. For applications in machine and plant engineering, for robotics and slide-in technology.

Shielded modul for data transmission, Cat5e up to Gigabit/s, crimp connection for durable vibration proof contacts, cable clamp 3 - 9 mm

Ethernet CAT. 5e 가



Lapp



Ethernet CAT. 5e 가

Crimp connection for permanent vibration proof contacting

CAT5e 1 Gigabit/s

cable clamp 3 - 9mm

1

(20.07.2024)

©2024 Lapp Group - all rights reserved.

<http://lappkorea.lappgroup.com>

data sheet

PN 0456 / 02_03.16

EPIC® MC BUS

ETIM 5:	ETIM 5.0 Class-ID: EC002641
	ETIM 5.0 : ()
ETIM 6:	ETIM 6.0 Class-ID: EC002641
	ETIM 6.0 Class : ()
(V):	50
:	0,8 kV
(A):	10
:	3
/ :	8
:	: 0.14 - 2.5 mm ²
:	PA
:	500
:	-40°C
	+125°C

가 VAT 가 가 .

(20.07.2024)



EPIC® MC BUS

	Article description	Contact type		Slots	Packaging unit
EPIC® MC BUS					
10390410	EPIC® MCS BUS 2x(4) CM		2x (4 +)	2	10
10390411	EPIC® MCB BUS 2x(4) CM		2x (4 +)	2	10
EPIC® MC BUS PIN					
10390412	EPIC® MCS BUS PIN 1x(4) CM		4 +	-	10
10390413	EPIC® MCB BUS PIN 1x(4) CM		4 +	-	10

(20.07.2024)

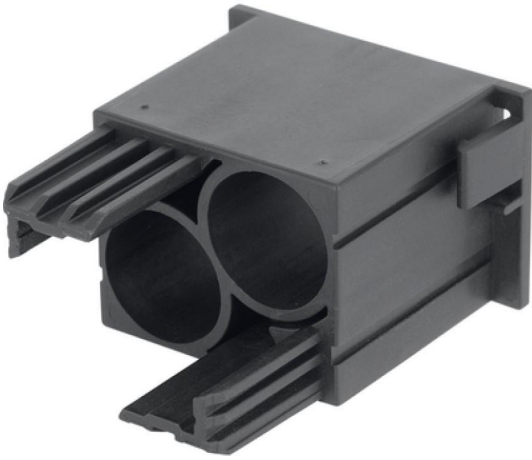
©2024 Lapp Group - all rights reserved.

<http://lappkorea.lappgroup.com>

data sheet

PN 0456 / 02_03.16

EPIC® MC BUS



(20.07.2024)

©2024 Lapp Group - all rights reserved.

<http://lappkorea.lappgroup.com>

data sheet

PN 0456 / 02_03.16