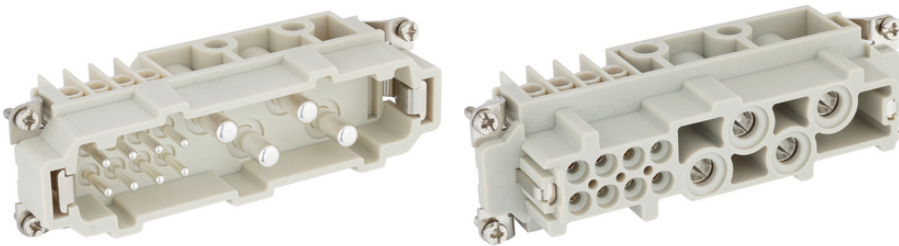


## EPIC® K 4/8

The combined insert for power and control is suitable for the transmission of high power combined with electrical signals. It finds application in very many areas of industry.

4-pole power insert for rectangular connector with 8 additional signal contacts



Lapp



1

ÖLFLEX® SERVO

ETIM 5:

ETIM 5.0 Class-ID: EC000438

ETIM 5.0 class :

ETIM 6:

ETIM 6.0 Class-ID: EC000438

(20.07.2024)

©2024 Lapp Group - all rights reserved.

<http://lappkorea.lappgroup.com>

data sheet

PN 0456 / 02\_03.16

# EPIC® K 4/8

(V):	IEC: 400 V
	UL: 600 V
	CSA: 600 V
:	6 kV
(A):	80 A Power
	16 A Control
:	3
:	UL94 V-0
:	< 5 mOhm
/ :	4 + 8 + PE
:	: 1.5 - 16.0 mm <sup>2</sup> ( )
	: 0.5 - 2.5 mm <sup>2</sup> ( )
(mm):	14 ± 0.5 mm (Power)
	6 ± 0.5 mm (Control)
:	PC,
:	500
:	UL- :
	UL : E75770
:	-40°C ... +125°C

16mm<sup>2</sup> PE 44424029

가 VAT 가 가 .  
 To connect stranded conductors, use a end sleeve.



## EPIC® K 4/8

	Article description	Contact type		Packaging unit
44424053	EPIC® K 4/8 SS		4 + 8 + PE	10
44424054	EPIC® K 4/8 BS		4 + 8 + PE	10

(20.07.2024)

©2024 Lapp Group - all rights reserved.

<http://lappkorea.lappgroup.com>

data sheet

PN 0456 / 02\_03.16