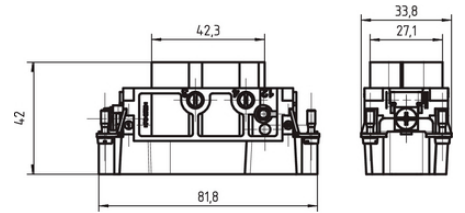
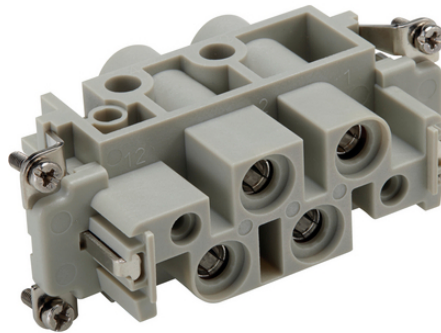
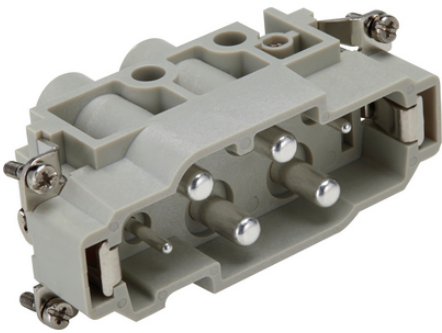


EPIC® K 4/2

가

가



Lapp



1

ÖLFLEX® SERVO

ETIM 5:

ETIM 5.0 Class-ID: EC000438

ETIM 5.0 class :

ETIM 6:

ETIM 6.0 Class-ID: EC000438

ETIM 6.0 Class-Description: Contact insert for industrial

(22.07.2024)

©2024 Lapp Group - all rights reserved.

<http://lappkorea.lappgroup.com>

data sheet

PN 0456 / 02_03.16

EPIC® K 4/2

	connectors
(V):	830 V Power 400 V Control
:	8 kV
(A):	80 A Power 16 A Control
:	3
:	UL94 V-0
:	< 5 mOhm
/ :	4 + 2 + PE
:	: 1.5 - 16.0 mm ² ()
	: 0.5 - 2.5 mm ² ()
(mm):	16 mm () 6 mm ()
:	PC,
:	500
:	UL- : UL : E75770
:	-40°C ... +125°C

16mm² PE 44424029 .

가 VAT 가 가 .
To connect stranded conductors, use a end sleeve.



EPIC® K 4/2

	Article description	Contact type		Packaging unit
EPIC® K 4/2				
44424043	EPIC® K 4/2 SS		4 + 2 + PE	10
44424044	EPIC® K 4/2 BS		4 + 2 + PE	10

(22.07.2024)

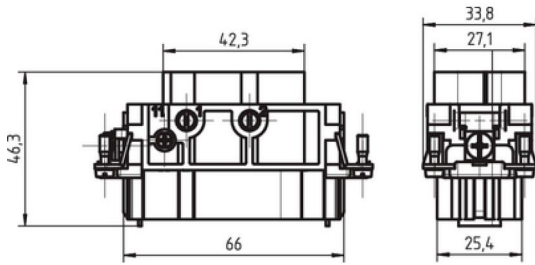
©2024 Lapp Group - all rights reserved.

<http://lappkorea.lappgroup.com>

data sheet

PN 0456 / 02_03.16

EPIC® K 4/2



(22.07.2024)

©2024 Lapp Group - all rights reserved.

<http://lappkorea.lappgroup.com>

data sheet

PN 0456 / 02_03.16