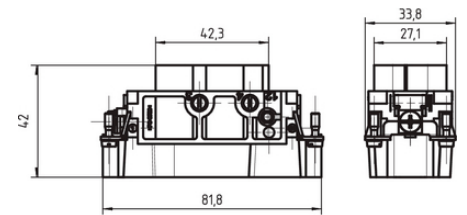
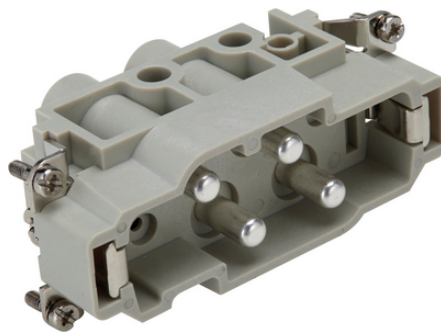
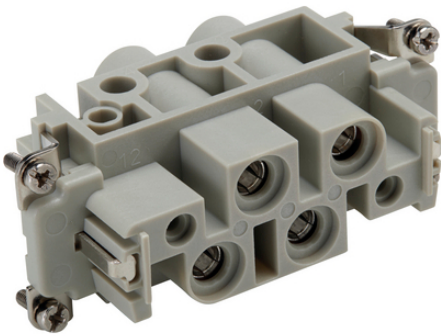


EPIC® K 4/0

ÖLFLEX SERVO



Lapp



1 가
ÖLFLEX® SERVO

ETIM 5:

ETIM 5.0 Class-ID: EC000438

ETIM 5.0 class :

ETIM 6:

ETIM 6.0 Class-ID: EC000438

(22.07.2024)

©2024 Lapp Group - all rights reserved.

<http://lappkorea.lappgroup.com>

data sheet

PN 0456 / 02_03.16

EPIC® K 4/0

ETIM 6.0 Class-Description: Contact insert for industrial connectors

(V):	830 V Power
:	8 kV
(A):	80 A Power
:	3
:	UL94 V-0
:	< 5 mOhm
/ :	4 + PE
:	: 1.5 - 16.0 mm ² ()
(mm):	16 mm ()
:	PC,
:	500
:	UL- :
:	UL : E75770
:	-40°C ... +125°C

16mm² PE 44424029 .

가 VAT 가 가 .
 To connect stranded conductors, use a end sleeve.



EPIC® K 4/0

	Article description	Contact type		Packaging unit
EPIC® 4/0				
44424041	EPIC® K 4/0 SS		4 + PE	10
44424042	EPIC® K 4/0 BS		4 + PE	10

(22.07.2024)

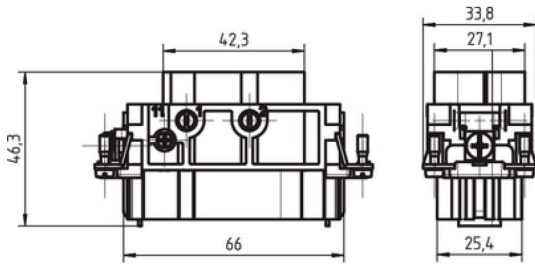
©2024 Lapp Group - all rights reserved.

<http://lappkorea.lappgroup.com>

data sheet

PN 0456 / 02_03.16

EPIC® K 4/0



(22.07.2024)