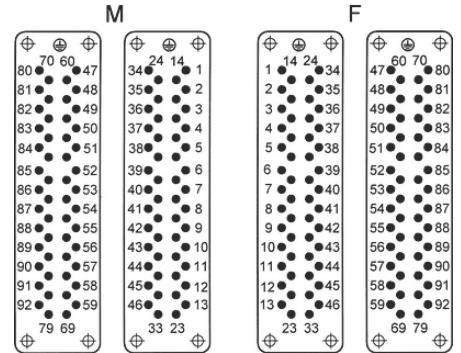
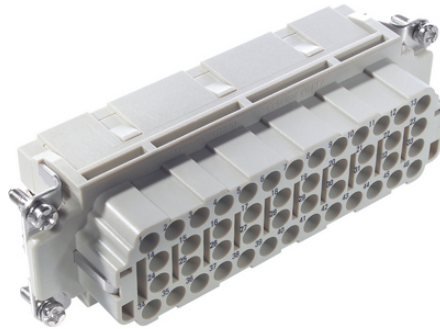
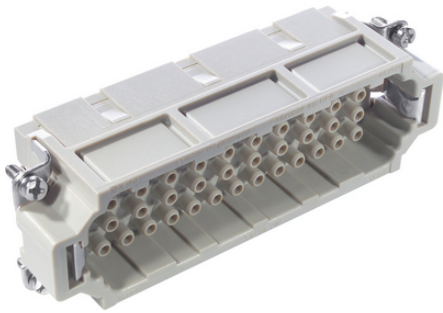


EPIC® H-EE 92

H-BE

가 H-EE

가



H-B

가

H-EE

()

ETIM 5:

ETIM 5.0 Class-ID: EC000438

ETIM 5.0 class :

ETIM 6:

ETIM 6.0 Class-ID: EC000438

ETIM 6.0 Class-Description: Contact insert for industrial connectors

(V):

IEC: 500 VUL: 600 VCSA: 600 V

:

6 kV

(A):

IEC: 16 A

UL: 16 A

(22.07.2024)

©2024 Lapp Group - all rights reserved.

<http://lappkorea.lappgroup.com>

data sheet

PN 0456 / 02_03.16

EPIC® H-EE 92

	CSA: 16 A
:	3
:	< 2 mOhm
:	, /
/ :	46 + PE
:	: 0.5 - 4.0 mm ²
:	100
VDE- :	UL- :
:	UL : E75770
:	-40°C to +100°C, short-term up to +125°C

가 VAT 가 가 .

(22.07.2024)



EPIC® H-EE 92

	Article description	Contact type			Packaging unit
H-EE 92					
10186500	H-EE 46 SC		machined	47 - 92	5
10187500	H-EE 46 BC		machined	47 - 92	5

(22.07.2024)

©2024 Lapp Group - all rights reserved.

<http://lappkorea.lappgroup.com>

data sheet

PN 0456 / 02_03.16