

EPIC® H-EE 32

H-BE

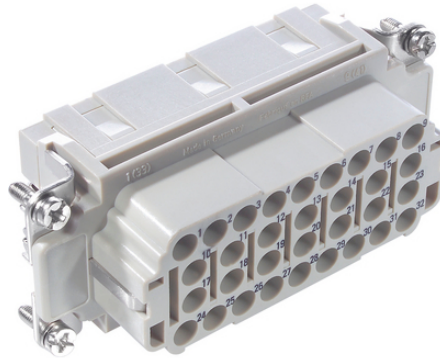
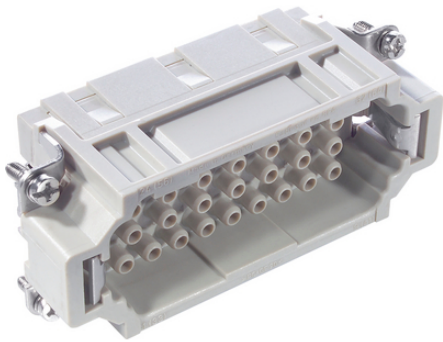
가 H-EE

가

+125

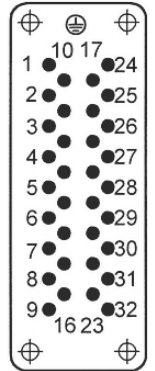
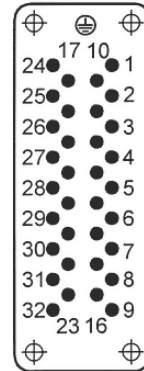
가

EPIC® H-EE 64 가
가



M

F



H-B 가 H-EE

()

ETIM 5:

ETIM 5.0 Class-ID: EC000438

ETIM 5.0 class :

ETIM 6:

ETIM 6.0 Class-ID: EC000438

ETIM 6.0 Class-Description: Contact insert for industrial connectors

(V):

IEC: 500 VUL: 600 VCSA: 600 V

:

6 kV

(20.07.2024)

©2024 Lapp Group - all rights reserved.

<http://lappkorea.lappgroup.com>

data sheet

PN 0456 / 02_03.16

EPIC® H-EE 32

| | |
|--------|--|
| (A): | IEC: 16 A |
| : | UL: 16 A |
| : | CSA: 16 A |
| : | 3 |
| : | < 2 mOhm |
| : | , / |
| / : | 32 + PE |
| : | : 0.5 - 4.0 mm ² |
| : | 100 |
| VDE- : | UL- : |
| : | UL : E75770 |
| : | -40°C to +100°C, short-term up to +125°C |

가 VAT 가 가 .



EPIC® H-EE 32

| | Article description | Contact type | | | Packaging unit |
|----------|---------------------|--------------|----------|--------|----------------|
| H-EE 32 | | | | | |
| 10184400 | H-EE 32 SC | | machined | 1 - 32 | 5 |
| 10185400 | H-EE 32 BC | | machined | 1 - 32 | 5 |

(20.07.2024)

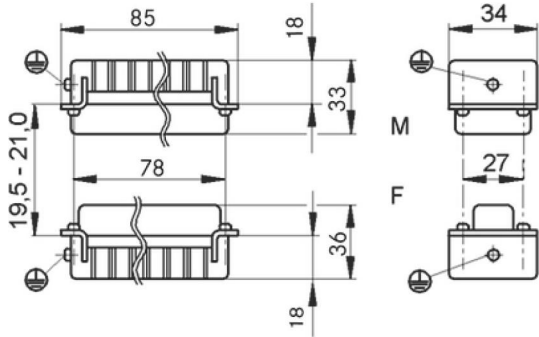
©2024 Lapp Group - all rights reserved.

<http://lappkorea.lappgroup.com>

data sheet

PN 0456 / 02_03.16

EPIC® H-EE 32



(20.07.2024)

©2024 Lapp Group - all rights reserved.
<http://lappkorea.lappgroup.com>

data sheet

PN 0456 / 02_03.16