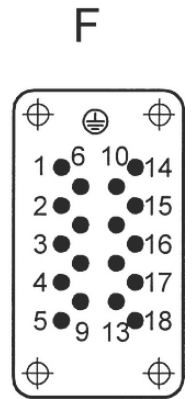
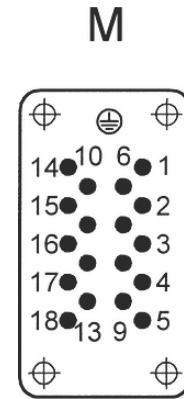
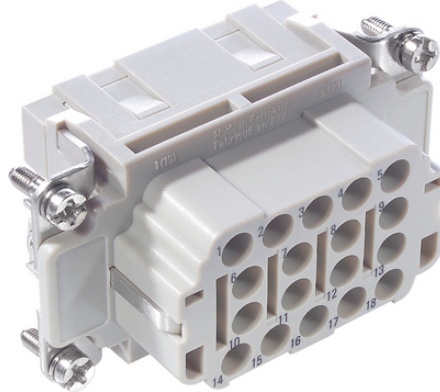
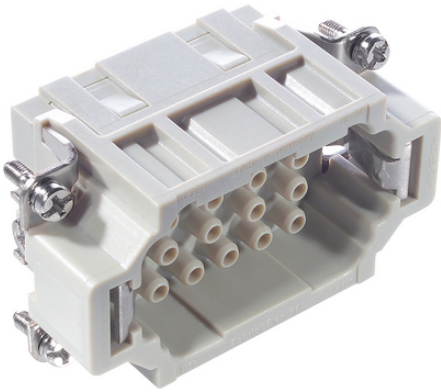


# EPIC® H-EE 18

H-BE  
18 가  
가 H-EE  
., 가



H-B 가 H-EE

( )

ETIM 5:

ETIM 5.0 Class-ID: EC000438

ETIM 5.0 class :

ETIM 6:

ETIM 6.0 Class-ID: EC000438

ETIM 6.0 Class-Description: Contact insert for industrial connectors

(V):

IEC: 500 VUL: 600 VCSA: 600 V

:

6 kV

(A):

IEC: 16 A

UL: 16 A

(22.07.2024)

©2024 Lapp Group - all rights reserved.

<http://lappkorea.lappgroup.com>

data sheet

PN 0456 / 02\_03.16

# EPIC® H-EE 18

	CSA: 16 A
:	3
:	< 2 mOhm
:	, /
/ :	18 + PE
:	: 0.5 - 4.0 mm <sup>2</sup>
:	100
VDE- :	UL- :
:	UL : E75770
:	-40°C to +100°C, short-term up to +125°C

가 VAT 가 가 .

(22.07.2024)



## EPIC® H-EE 18

	Article description	Contact type			Packaging unit
H-EE 18					
10182400	H-EE 18 SC		machined	1 - 18	10
10183400	H-EE 18 BC		machined	1 - 18	10

(22.07.2024)

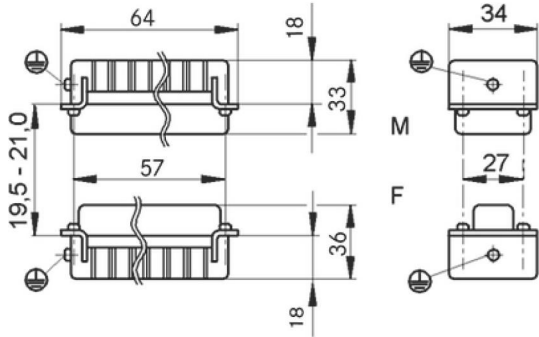
©2024 Lapp Group - all rights reserved.

<http://lappkorea.lappgroup.com>

data sheet

PN 0456 / 02\_03.16

# EPIC® H-EE 18



(22.07.2024)