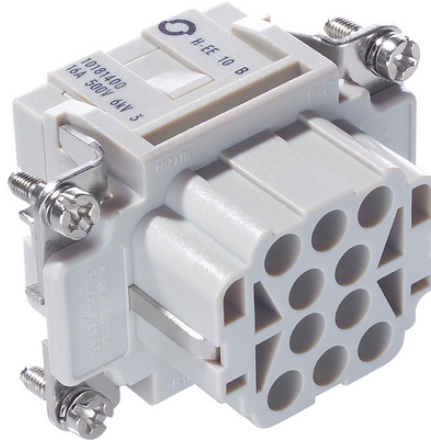
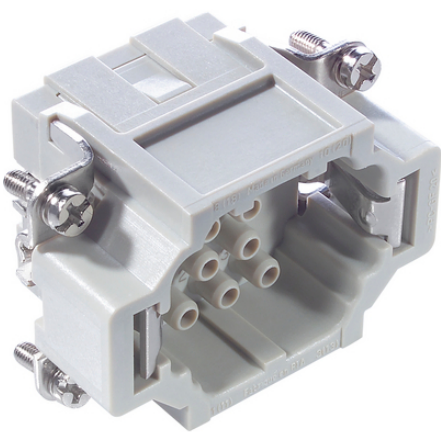


# EPIC® H-EE 10

H-BE

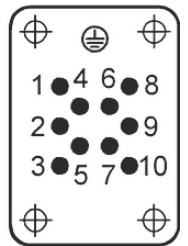
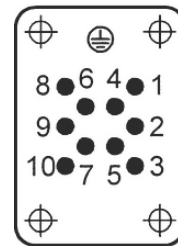
가 H-EE

가



M

F



H-B

가

H-EE

( )

ETIM 5:

ETIM 5.0 Class-ID: EC000438

ETIM 5.0 class :

ETIM 6:

ETIM 6.0 Class-ID: EC000438

ETIM 6.0 Class-Description: Contact insert for industrial connectors

(V):

IEC: 500 VUL: 600 VCSA: 600 V

:

6 kV

(A):

IEC: 16 A

UL: 16 A

(16.07.2024)

©2024 Lapp Group - all rights reserved.

<http://lappkorea.lappgroup.com>

data sheet

PN 0456 / 02\_03.16

# EPIC® H-EE 10

|        |  |
|--------|--|
|        | CSA: 16 A                                |
| :      | 3  |
| :      | < 2 mOhm                                 |
| :      | , /                                      |
| / :    | 10 + PE                                  |
| :      | : 0.5 - 4.0 mm <sup>2</sup>              |
| :      | 100                                      |
| VDE- : | UL- :                                    |
| :      | UL : E75770                              |
| :      | -40°C to +100°C, short-term up to +125°C |

가 VAT 가 가 .

(16.07.2024)



## EPIC® H-EE 10

|          | Article description | Contact type |          |        | Packaging unit |
|----------|---------------------|--------------|----------|--------|----------------|
| H-EE 10  |                     |              |          |        |                |
| 10180400 | H-EE 10 SC          |              | machined | 1 - 10 | 10             |
| 10181400 | H-EE 10 BC          |              | machined | 1 - 10 | 10             |

(16.07.2024)

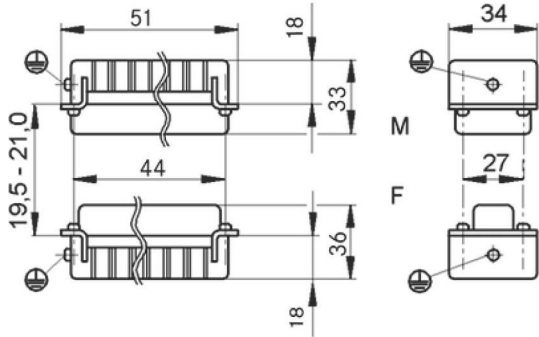
©2024 Lapp Group - all rights reserved.

<http://lappkorea.lappgroup.com>

data sheet

PN 0456 / 02\_03.16

# EPIC® H-EE 10



(16.07.2024)

©2024 Lapp Group - all rights reserved.  
<http://lappkorea.lappgroup.com>

data sheet

PN 0456 / 02\_03.16