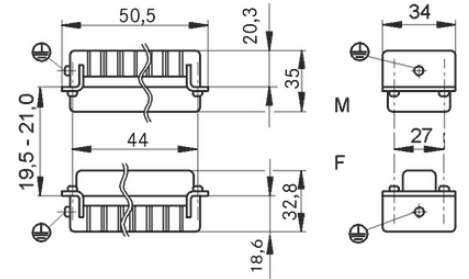
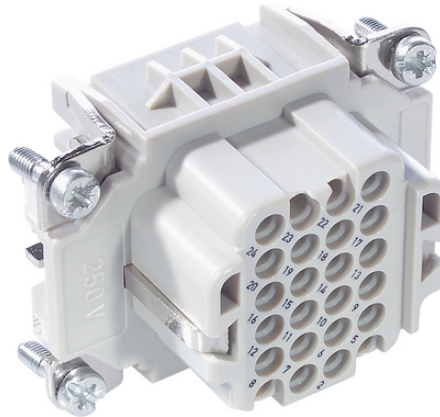
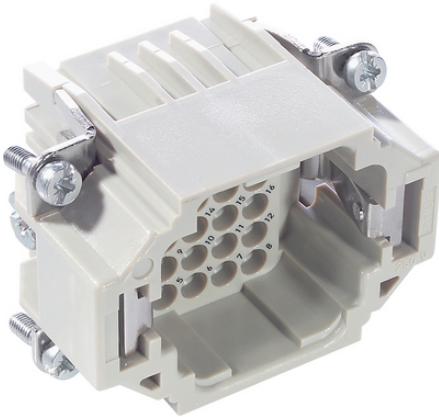


EPIC® H-DD 24

가 H-DD

가 가



H-DD

ETIM 5:

ETIM 5.0 Class-ID: EC000438

ETIM 5.0 class :

ETIM 6:

ETIM 6.0 Class-ID: EC000438

ETIM 6.0 Class-Description: Contact insert for industrial connectors

(V):

IEC: 250 V

UL: 600 V

CSA: 600 V

2.5 kV

(15.07.2024)

©2024 Lapp Group - all rights reserved.

<http://lappkorea.lappgroup.com>

data sheet

PN 0456 / 02\_03.16

# EPIC® H-DD 24

(A):	IEC: 10 A
	UL: 8.5 A
	CSA: 10 A
:	2
:	< 3 mOhm
:	, /
/ :	24 + PE
:	: 0.14 - 2.5 mm <sup>2</sup>
:	100
VDE- :	: VDE-REG. : B437
	UL- :
	UL : E75770
:	-40°C to +100°C, short-term up to +125°C

가 VAT 가 가 .

(15.07.2024)



## EPIC® H-DD 24

	Article description	Contact type			Packaging unit
H-DD 24					
11285000	H-DD 24 SCM		machined	1 - 24	5
11286000	H-DD 24 BCM		machined	1 - 24	5

(15.07.2024)

©2024 Lapp Group - all rights reserved.

<http://lappkorea.lappgroup.com>

data sheet

PN 0456 / 02\_03.16