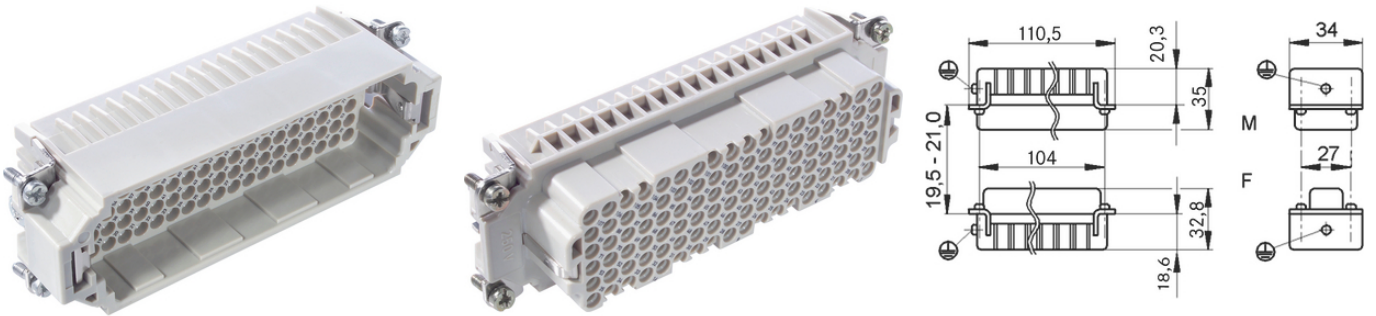


EPIC® H-DD 108

가 H-DD

EPIC® H-DD 216 가



H-DD

ETIM 5:

ETIM 5.0 Class-ID: EC000438

ETIM 5.0 class :

ETIM 6:

ETIM 6.0 Class-ID: EC000438

ETIM 6.0 Class-Description: Contact insert for industrial connectors

(V):

IEC: 250 V

UL: 600 V

(19.07.2024)

©2024 Lapp Group - all rights reserved.

<http://lappkorea.lappgroup.com>

data sheet

PN 0456 / 02_03.16



EPIC® H-DD 108

	CSA: 600 V
:	2.5 kV
(A):	IEC: 10 A
	UL: 8.5 A
	CSA: 10 A
:	2
:	< 3 mOhm
:	, /
/ :	108 + PE
:	: 0.14 - 2.5 mm ²
:	100
VDE- :	: VDE-REG. : B437
	UL- :
	UL : E75770
:	-40°C to +100°C, short-term up to +125°C

가 VAT 가 가 .

(19.07.2024)



EPIC® H-DD 108

	Article description	Contact type			Packaging unit
H-DD 108					
11285300	H-DD 108 SCM		machined	1 - 108	5
11286300	H-DD 108 BCM		machined	1 - 108	5

(19.07.2024)

©2024 Lapp Group - all rights reserved.

<http://lappkorea.lappgroup.com>

data sheet

PN 0456 / 02_03.16