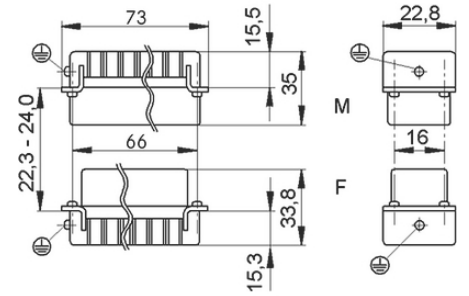
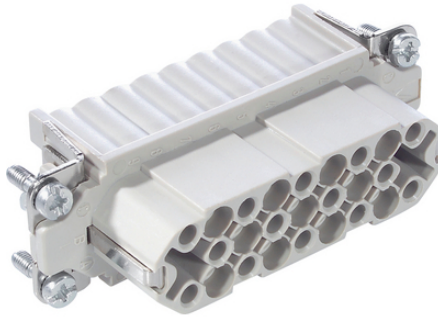
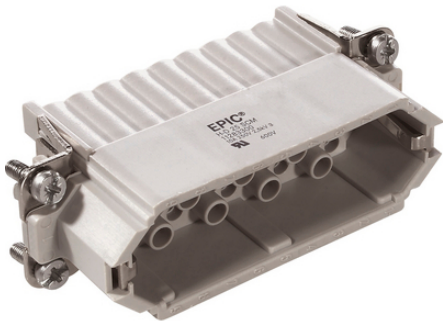


EPIC® H-D 25 machined

가 가
Made in Germany



H-D

ETIM 5:

ETIM 5.0 Class-ID: EC000438

ETIM 5.0 class :

ETIM 6:

ETIM 6.0 Class-ID: EC000438

ETIM 6.0 Class-Description: Contact insert for industrial connectors

(V):

IEC: 250 V

UL: 250 V

(30.07.2024)

©2024 Lapp Group - all rights reserved.

<http://lappkorea.lappgroup.com>

data sheet

PN 0456 / 02_03.16



EPIC® H-D 25 machined

:	2.5 kV
(A):	IEC: 10 A UL: 10 A
:	3
:	< 2 mOhm
:	, /
/ :	25 + PE
:	: 0.14 - 2.5 mm ²
:	100
:	: VDE-REG. : B437
:	UL- :
:	UL : E75770
:	-40°C to +100°C, short-term up to +125°C

가 VAT 가 가 .

(30.07.2024)



EPIC® H-D 25 machined

	Article description	Contact type			Packaging unit
11283300	H-D 25 SCM		machined	1 - 25	5
11282300	H-D 25 BCM		machined	1 - 25	5

(30.07.2024)

©2024 Lapp Group - all rights reserved.

<http://lappkorea.lappgroup.com>

data sheet

PN 0456 / 02_03.16