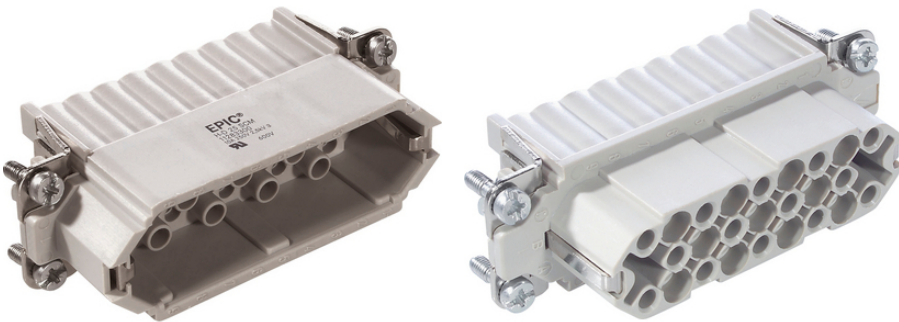


# EPIC® H-D 15 stamped

가 H-D

Made in Europe



H-D

ETIM 5:

ETIM 5.0 Class-ID: EC000438

ETIM 5.0 class :

ETIM 6:

ETIM 6.0 Class-ID: EC000438

ETIM 6.0 Class-Description: Contact insert for industrial connectors

(V):

IEC: 250 V

UL: 250 V

:

2.5 kV

(22.07.2024)

©2024 Lapp Group - all rights reserved.

<http://lappkorea.lappgroup.com>

data sheet

PN 0456 / 02\_03.16

# EPIC® H-D 15 stamped

(A):	IEC: 10 A
:	UL: 10 A
:	3
:	< 2 mOhm
:	, /
/ :	15 + PE
:	: 0.14 - 2.5 mm <sup>2</sup>
:	100
:	: VDE-REG. : B437
:	UL- :
:	UL : E75770
:	-40°C to +100°C, short-term up to +125°C

가 VAT 가 가 .



## EPIC® H-D 15 stamped

	Article description	Contact type			Packaging unit
11255000	H-D 15 SCG		stamped	1 - 15	5
11256000	H-D 15 BCG		stamped	1 - 15	5

(22.07.2024)

©2024 Lapp Group - all rights reserved.

<http://lappkorea.lappgroup.com>

data sheet

PN 0456 / 02\_03.16