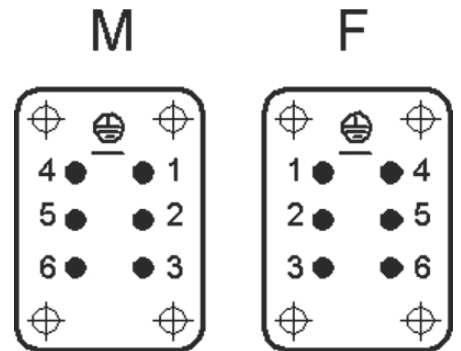
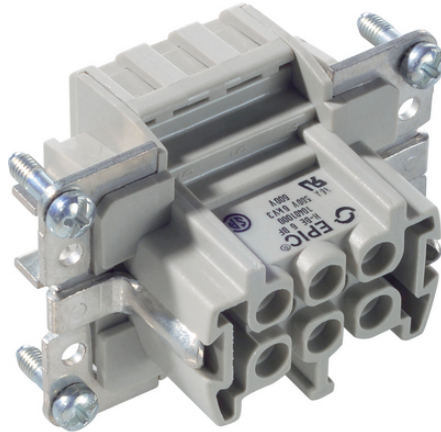
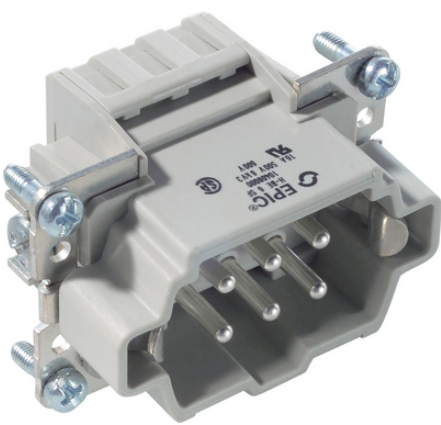


EPIC® H-BE 6 Cage clamp

가

가



Lapp



EPIC® H-BE

가

(20.07.2024)

©2024 Lapp Group - all rights reserved.

<http://lappkorea.lappgroup.com>

data sheet

PN 0456 / 02_03.16

EPIC® H-BE 6 Cage clamp

ETIM 5:	ETIM 5.0 Class-ID: EC000438
	ETIM 5.0 class :
ETIM 6:	ETIM 6.0 Class-ID: EC000438
	ETIM 6.0 Class-Description: Contact insert for industrial connectors
(V):	IEC: 500 VUL: 600 VCSA: 600 V
:	6 kV
(A):	IEC: 16 A
	UL: 16 A
	CSA: 16 A
:	3
:	UL94 V-2
:	1.5 - 4 mohm
:	,
/ :	6 + PE
:	: 0.5 - 2.5 mm ²
(mm):	7
:	PC,
:	100
:	UL- :
:	UL : E75770
:	-40°C to +100°C, short-term up to +125°C

가 VAT 가 가 .

(20.07.2024)



EPIC® H-BE 6 Cage clamp

	Article description	Contact type			Packaging unit
H-BE 6					
10400000	EPIC® H-BE 6 SF		yes	1 - 6	10
10401000	EPIC® H-BE 6 BF		yes	1 - 6	10

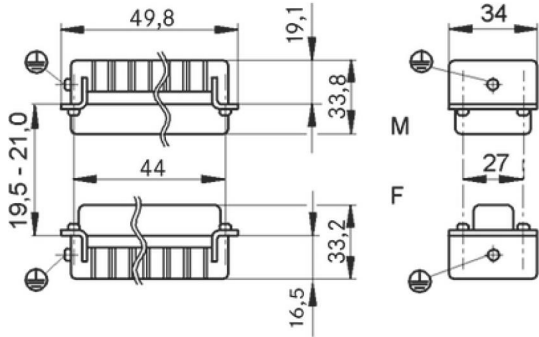
(20.07.2024)

©2024 Lapp Group - all rights reserved.
<http://lappkorea.lappgroup.com>

data sheet

PN 0456 / 02_03.16

EPIC® H-BE 6 Cage clamp



(20.07.2024)

©2024 Lapp Group - all rights reserved.
<http://lappkorea.lappgroup.com>

data sheet

PN 0456 / 02_03.16