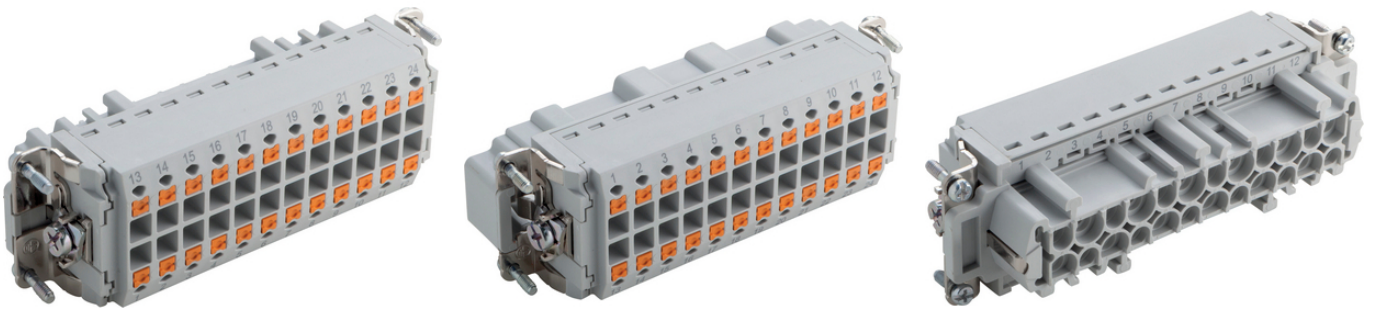


EPIC® H-BE 48 Push-In termination

가



Lapp



2mm 가 가

(22.07.2024)

©2024 Lapp Group - all rights reserved.

<http://lappkorea.lappgroup.com>

data sheet

PN 0456 / 02_03.16

EPIC® H-BE 48 Push-In termination

Railway applications

- Fire protection on railway vehicles: Test according EN 45545-2. Requirement sets R22 and R23. Hazard level HL1, HL2 and HL3

EPIC® H-BE

/

ETIM 5:	ETIM 5.0 Class-ID: EC000438
	ETIM 5.0 class :
ETIM 6:	ETIM 6.0 Class-ID: EC000438
	ETIM 6.0 Class-Description: Contact insert for industrial connectors
(V):	IEC: 500 VUL: 600 VCSA: 600 V
:	6 kV
(A):	IEC: 16 A
	UL: 13 A
	CSA: 13 A
:	3
:	UL94 V-0
:	< 2 mOhm
:	,
/ :	48 + PE
:	- : 0.14 - 2.5mm ²
(mm):	10
:	PA
:	500
:	UL- :
:	UL : E75770
:	-40°C to +100°C, short-term up to +125°C

가 VAT 가 가 .



EPIC® H-BE 48 Push-In termination

	Article description	Contact type			Packaging unit
H-BE 48 Push-In termination					
44423210	EPIC® H-BE 24 SP 25-48		yes	25 - 48	5
44423211	EPIC® H-BE 24 BP 25-48		yes	25 - 48	5

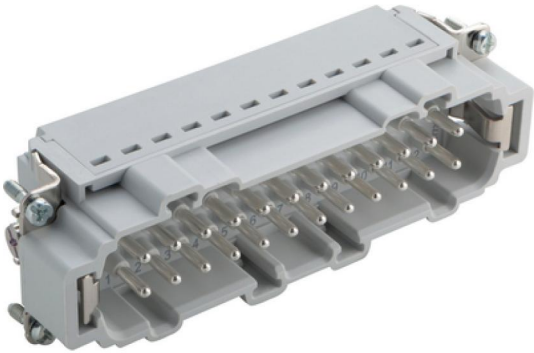
(22.07.2024)

©2024 Lapp Group - all rights reserved.
<http://lappkorea.lappgroup.com>

data sheet

PN 0456 / 02_03.16

EPIC® H-BE 48 Push-In termination



(22.07.2024)