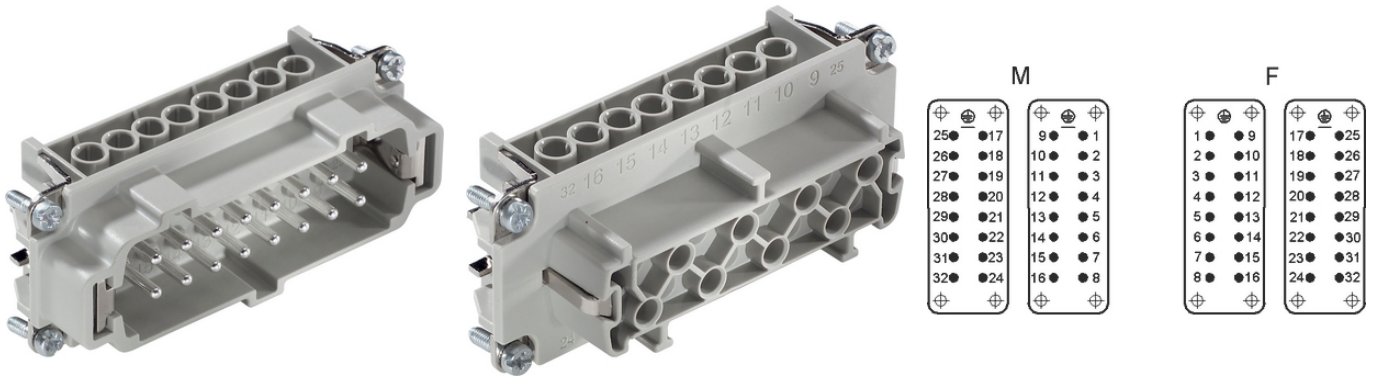


EPIC® H-BE 32 Screw termination

Made in Germany

가



Lapp



가

EPIC® H-BE

Railway applications

- Fire protection on railway vehicles: Test according EN 45545-2. Requirement sets R22 and R23. Hazard level HL1, HL2 and HL3

(21.07.2024)

EPIC® H-BE 32 Screw termination

/	
ETIM 5:	ETIM 5.0 Class-ID: EC000438 ETIM 5.0 class :
ETIM 6:	ETIM 6.0 Class-ID: EC000438 ETIM 6.0 Class-Description: Contact insert for industrial connectors
(V):	IEC: 500 VUL: 600 VCSA: 600 V
:	6 kV
(A):	IEC: 16 A UL: 16 A CSA: 16 A
:	3
:	UL94 V-0
:	< 2 mOhm
:	,
/ :	32 + PE
:	: 0.5 - 2.5 mm ²
(mm):	8
:	PC,
:	500
:	: VDE-REG. : B437
:	UL :
:	UL : E75770 E483837
:	-40°C to +100°C, short-term up to +125°C

가 VAT 가 가 .



EPIC® H-BE 32 Screw termination

	Article description	Contact type			Packaging unit
H-BE 32					
10202000	EPIC® H-BE 16 SS 17-32		yes	17 - 32	5
10203000	EPIC® H-BE 16 BS 17-32		yes	17 - 32	5
10202100	EPIC® H-BE 16 SS 17-32		-	17 - 32	5
10203100	EPIC® H-BE 16 BS 17-32		-	17 - 32	5

(21.07.2024)

©2024 Lapp Group - all rights reserved.
<http://lappkorea.lappgroup.com>

data sheet

PN 0456 / 02_03.16