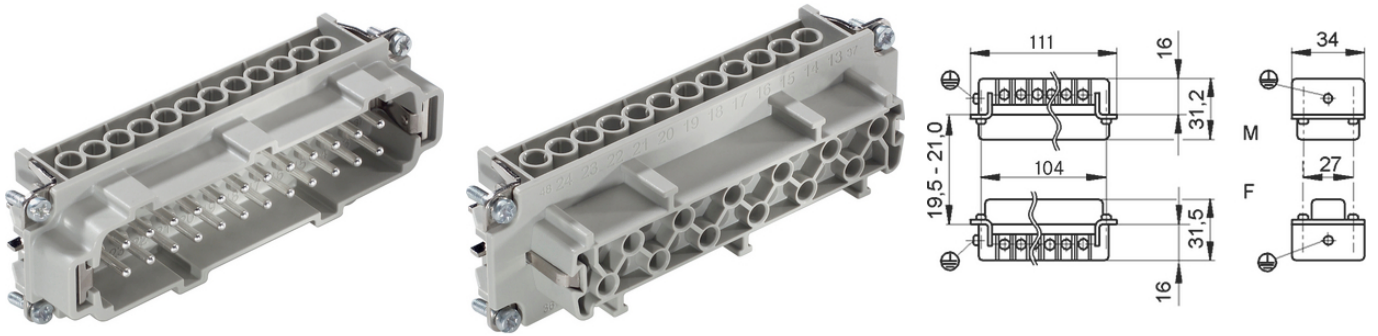


EPIC® H-BE 24 Screw termination

+125

Made in Germany

가



Lapp



가

EPIC® H-BE

Railway applications

- Fire protection on railway vehicles: Test according EN 45545-2. Requirement sets R22 and R23. Hazard level HL1, HL2 and HL3

UL UL 508/UL 2237

(19.07.2024)

©2024 Lapp Group - all rights reserved.

<http://lappkorea.lappgroup.com>

data sheet

PN 0456 / 02\_03.16

# EPIC® H-BE 24 Screw termination

/	
ETIM 5:	ETIM 5.0 Class-ID: EC000438 ETIM 5.0 class :
ETIM 6:	ETIM 6.0 Class-ID: EC000438 ETIM 6.0 Class-Description: Contact insert for industrial connectors
(V):	IEC: 500 VUL: 600 VCSA: 600 V
:	6 kV
(A):	IEC: 16 A UL: 16 A CSA: 16 A
:	3
:	UL94 V-0
:	< 2 mOhm
:	,
/ :	24 + PE
:	: 0.5 - 2.5 mm <sup>2</sup>
(mm):	8
:	PC,
:	500
:	: VDE-REG. : B437
:	UL :
:	UL : E75770 E483837
:	-40°C to +100°C, short-term up to +125°C

가 VAT 가 가 .



# EPIC® H-BE 24 Screw termination

	Article description	Contact type			Packaging unit
H-BE 24					
10196000	EPIC® H-BE 24 SS		yes	1 - 24	5
10197000	EPIC® H-BE 24 BS		yes	1 - 24	5
10196100	EPIC® H-BE 24 SS		-	1 - 24	5
10197100	EPIC® H-BE 24 BS		-	1 - 24	5

(19.07.2024)

©2024 Lapp Group - all rights reserved.  
<http://lappkorea.lappgroup.com>

data sheet

PN 0456 / 02\_03.16