

# EPIC® H-BE 24 Crimp termination

가

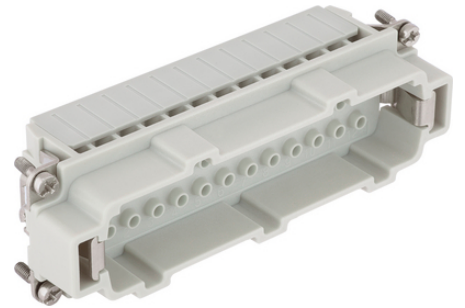
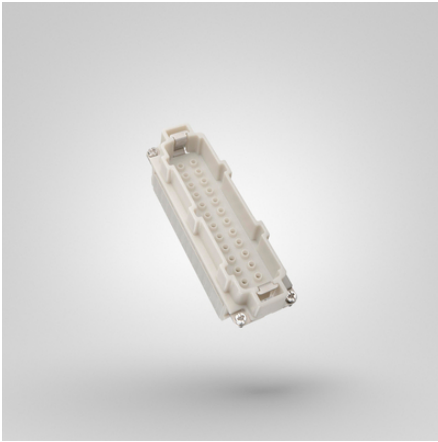
4 mm<sup>2</sup>

EPIC® H-BE 48

가

-

가



Lapp



EPIC® H-BE

-

가

Railway applications

- Fire protection on railway vehicles: Test according EN 45545-2. Requirement sets R22 and R23. Hazard level HL1, HL2 and HL3

(20.07.2024)

# EPIC® H-BE 24 Crimp termination

/	
ETIM 5:	ETIM 5.0 Class-ID: EC000438 ETIM 5.0 class :
ETIM 6:	ETIM 6.0 Class-ID: EC000438 ETIM 6.0 Class-Description: Contact insert for industrial connectors
(V):	IEC: 500 VUL: 600 VCSA: 600 V
:	6 kV
(A):	IEC: 16 A UL: 16 A CSA: 16 A
:	3
:	UL94 V-0
:	< 2 mOhm
:	, /
/ :	24 + PE
:	: 0.14 ~ 4.0 mm <sup>2</sup>
:	PC,
:	500
:	UL- : UL : E75770
:	-40°C ... +125°C

가 VAT 가 가 .



## EPIC® H-BE 24 Crimp termination

	Article description	Contact type		Packaging unit
H-BE 24				
10186002	EPIC® H-BE 24 SCM		1 - 24	5
10187002	EPIC® H-BE 24 BCM		1 - 24	5

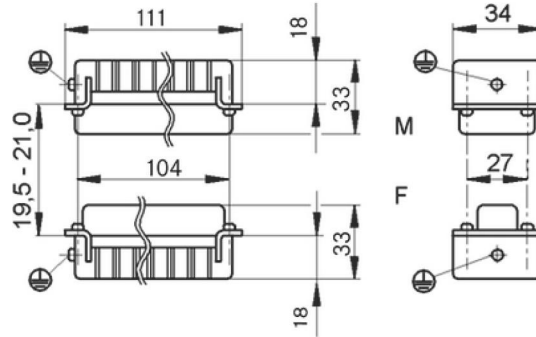
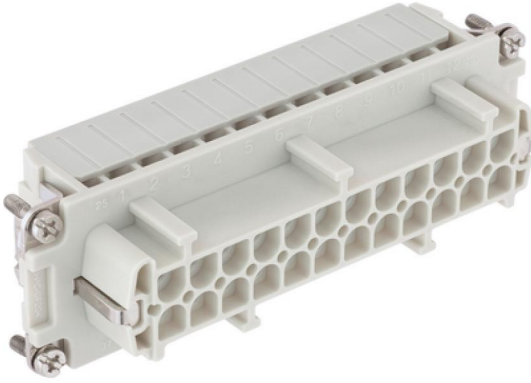
(20.07.2024)

©2024 Lapp Group - all rights reserved.  
<http://lappkorea.lappgroup.com>

data sheet

PN 0456 / 02\_03.16

## EPIC® H-BE 24 Crimp termination



(20.07.2024)

©2024 Lapp Group - all rights reserved.  
<http://lappkorea.lappgroup.com>

data sheet

PN 0456 / 02\_03.16