

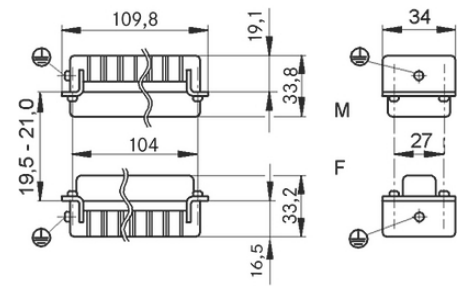
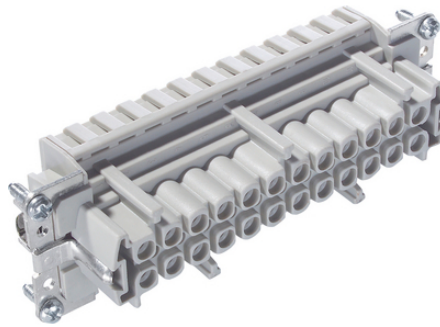
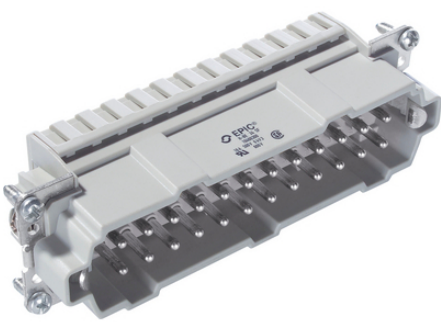
EPIC® H-BE 24 Cage clamp

가

EPIC® H-BE 48

가

가



Lapp



EPIC® H-BE

가

(20.07.2024)

EPIC® H-BE 24 Cage clamp

| | |
|---------|--|
| ETIM 5: | ETIM 5.0 Class-ID: EC000438 |
| | ETIM 5.0 class : |
| ETIM 6: | ETIM 6.0 Class-ID: EC000438 |
| | ETIM 6.0 Class-Description: Contact insert for industrial connectors |
| (V): | IEC: 500 VUL: 600 VCSA: 600 V |
| : | 6 kV |
| (A): | IEC: 16 A |
| | UL: 16 A |
| | CSA: 16 A |
| : | 3 |
| : | UL94 V-2 |
| : | 1.5 - 4 mohm |
| : | , |
| / : | 24 + PE |
| : | : 0.5 - 2.5 mm ² |
| (mm): | 7 |
| : | 100 |
| : | UL- : |
| : | UL : E75770 |
| : | -40°C to +100°C, short-term up to +125°C |

가 VAT 가 가 .

(20.07.2024)



EPIC® H-BE 24 Cage clamp

| | Article description | Contact type | | | Packaging unit |
|----------|---------------------|--------------|-----|--------|----------------|
| H-BE 24 | | | | | |
| 10400300 | EPIC® H-BE 24 SF | | yes | 1 - 24 | 5 |
| 10401300 | EPIC® H-BE 24 BF | | yes | 1 - 24 | 5 |

(20.07.2024)

©2024 Lapp Group - all rights reserved.

<http://lappkorea.lappgroup.com>

data sheet

PN 0456 / 02_03.16