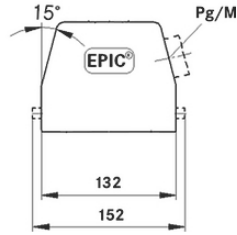
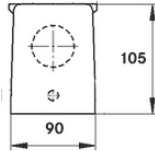
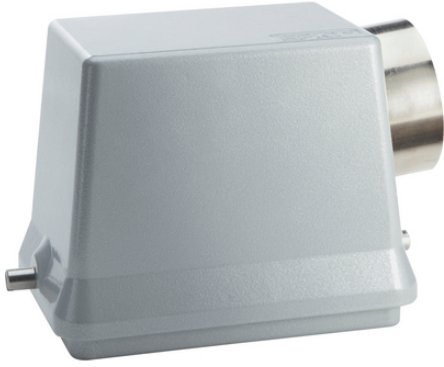


**EPIC® H-B 48 TS**

H-B 2



가

neck /

ETIM 5:

ETIM 5.0 Class-ID: EC000437

ETIM 5.0 class :

ETIM 6:

ETIM 6.0 Class-ID: EC000437

ETIM 6.0 Class-Description: Housing for industrial connectors

:

:

: -

: NBR

가:

IP 65 (latched)

:

-40°C to +100°C, short-term up to +125°C

가 VAT 가 가 .

(20.07.2024)

©2024 Lapp Group - all rights reserved.

<http://lappkorea.lappgroup.com>

data sheet

PN 0456 / 02\_03.16



# EPIC® H-B 48 TS

	Article description	M	PG	Neck	Packaging unit
H-B	:	(	,	)	
10158000	H-B 48 TS 29	-	29	yes	1
10159000	H-B 48 TS 36	-	36	yes	1
10159200	H-B 48 TS 36	-	36	-	1
10160000	H-B 48 TS 42	-	42	yes	1
19158000	H-B 48 TS M32	32	-	-	1
19159000	H-B 48 TS M40	40	-	-	1
19160000	H-B 48 TS M50	50	-	-	1

(20.07.2024)

©2024 Lapp Group - all rights reserved.

<http://lappkorea.lappgroup.com>

data sheet

PN 0456 / 02\_03.16