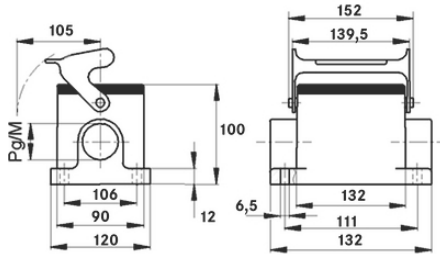
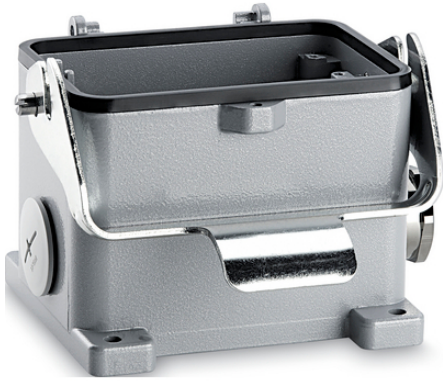


EPIC® H-B 48 SGR-LB

H-B 2



가

M40 housing extension on M50 with SKINTOP 53112083 possible (clamping range 27 - 35 mm)

1

ETIM 5:

ETIM 5.0 Class-ID: EC000437

ETIM 5.0 class :

ETIM 6:

ETIM 6.0 Class-ID: EC000437

ETIM 6.0 Class-Description: Housing for industrial connectors

:

:

: NBR

가:

IP 65 (latched)

:

-40°C to +100°C, short-term up to +125°C

가 VAT 가 가 .

(20.07.2024)

©2024 Lapp Group - all rights reserved.

<http://lappkorea.lappgroup.com>

data sheet

PN 0456 / 02_03.16



EPIC® H-B 48 SGR-LB

	Article description	M	PG	Packaging unit
H-B	: - (1 ,)			
10165000	H-B 48 SGR 29	-	29	1
10165100	H-B 48 SGR 36	-	36	1
19165000	H-B 48 SGR M32	32	-	1
19165100	H-B 48 SGR M40	40	-	1

(20.07.2024)

©2024 Lapp Group - all rights reserved.

<http://lappkorea.lappgroup.com>

data sheet

PN 0456 / 02_03.16