

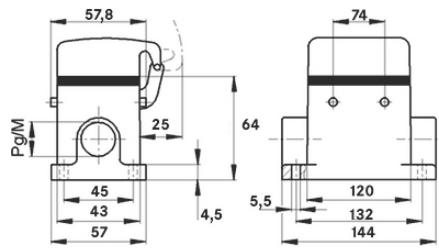
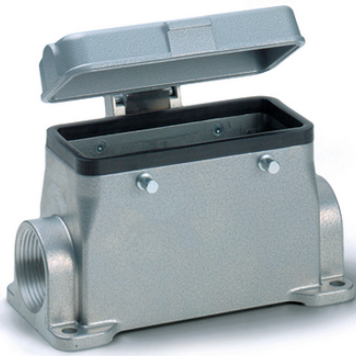
EPIC® H-B 24 SDRL-BO

H-B.

2

2 가

UL50E



Lapp



4

(13.07.2024)

EPIC® H-B 24 SDRL-BO

- ,
2

ETIM 5:

ETIM 5.0 Class-ID: EC000437

ETIM 5.0 class :

ETIM 6:

ETIM 6.0 Class-ID: EC000437

ETIM 6.0 Class-Description: Housing for industrial connectors

:

: - ,

: -

: NBR

가:

IP 65 (latched)

IP 40 (cover closed)

NEMA 250, UL50E: 12, 4 (latched)

VDE- :

: VDE-REG. : B437

UL- :

UL : E75770

:

-40°C to +100°C, short-term up to +125°C

가 VAT 가 가 .

(13.07.2024)

©2024 Lapp Group - all rights reserved.

<http://lappkorea.lappgroup.com>

data sheet

PN 0456 / 02_03.16



EPIC® H-B 24 SDRL-BO

	Article description	M	PG	Packaging unit
H-B	: - (, 2 ,)			
10109000	H-B 24 SDRL-BO 21	-	21	5
19109000	H-B 24 SDRL-BO M25	25	-	5

(13.07.2024)

©2024 Lapp Group - all rights reserved.

<http://lappkorea.lappgroup.com>

data sheet

PN 0456 / 02_03.16