

EPIC® H-B 16 SGRLH

H-B.

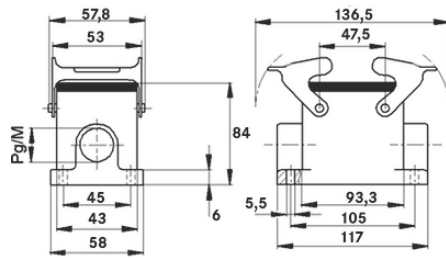
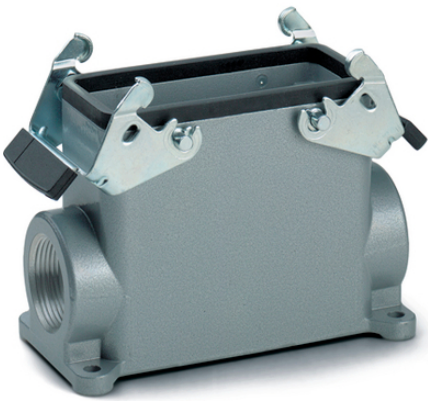
2

2

2

가

UL50E



Lapp



2

가

(20.07.2024)

©2024 Lapp Group - all rights reserved.

<http://lappkorea.lappgroup.com>

data sheet

PN 0456 / 02_03.16

EPIC® H-B 16 SGRLH

- ,
2

ETIM 5:

ETIM 5.0 Class-ID: EC000437

ETIM 5.0 class :

ETIM 6:

ETIM 6.0 Class-ID: EC000437

ETIM 6.0 Class-Description: Housing for industrial connectors

:

: - ,

: -

: NBR

가:

IP 65 (latched)

NEMA 250, UL50E: 12, 4 (latched)

VDE- :

: VDE-REG. : B437

UL- :

UL : E75770

:

-40°C to +100°C, short-term up to +125°C

가 VAT 가 가 .

(20.07.2024)

©2024 Lapp Group - all rights reserved.

<http://lappkorea.lappgroup.com>

data sheet

PN 0456 / 02_03.16



EPIC® H-B 16 SGRLH

	Article description	M	PG	Packaging unit
H-B	: - (2 , ,)			
70086200	H-B 16 SGRLH 21	-	21	5
70086400	H-B 16 SGRLH 29	-	29	5
79086200	H-B 16 SGRLH M25	25	-	5
79086400	H-B 16 SGRLH M32	32	-	5

(20.07.2024)

©2024 Lapp Group - all rights reserved.

<http://lappkorea.lappgroup.com>

data sheet

PN 0456 / 02_03.16