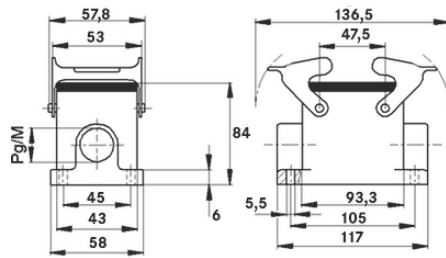
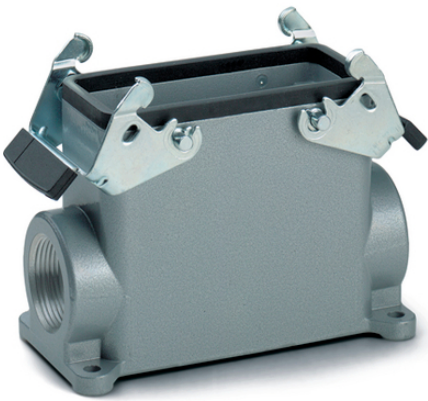


EPIC® H-B 16 SGRH

H-B.

2 가
UL50E



Lapp



(08.05.2024)

EPIC® H-B 16 SGRH

- ,
1

ETIM 5:

ETIM 5.0 Class-ID: EC000437
ETIM 5.0 class :

ETIM 6:

ETIM 6.0 Class-ID: EC000437
ETIM 6.0 Class-Description: Housing for industrial connectors

:

: - ,
:
: NBR

가:

IP 65 (latched)
NEMA 250, UL50E: 12, 4 (latched)

VDE- :

: VDE-REG. : B437

UL- :

UL : E75770

:

-40°C to +100°C, short-term up to +125°C

가 VAT 가 가 .



EPIC® H-B 16 SGRH

	Article description	M	PG	/ PU
H-B	: - (1 , ,)			
70085200	H-B 16 SGRH 21	-	21	5
70085400	H-B 16 SGRH 29	-	29	5
79085200	H-B 16 SGRH M25	25	-	5
79085400	H-B 16 SGRH M32	32	-	5

(08.05.2024)

©2024 Lapp Group - all rights reserved.
<http://lappkorea.lappgroup.com>

data sheet

PN 0456 / 02_03.16