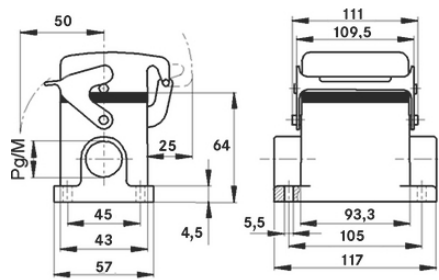
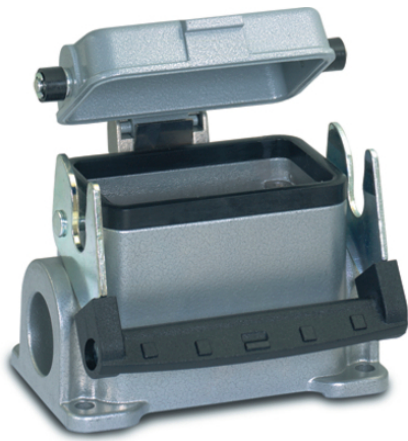


EPIC® H-B 16 SDR-LB

H-B.

UL50E



Lapp



(22.07.2024)

©2024 Lapp Group - all rights reserved.

<http://lappkorea.lappgroup.com>

data sheet

PN 0456 / 02_03.16

EPIC® H-B 16 SDR-LB

- ,
1

ETIM 5:

ETIM 5.0 Class-ID: EC000437
ETIM 5.0 class :

ETIM 6:

ETIM 6.0 Class-ID: EC000437
ETIM 6.0 Class-Description: Housing for industrial connectors

:

: - ,
: -
: NBR

가:

IP 65 (latched)
UL50 12 ()

VDE- :

: VDE-REG. : B437

UL- :
UL : E75770

:

-40°C to +100°C, short-term up to +125°C

가 VAT 가 가 .



EPIC® H-B 16 SDR-LB

	Article description	M	PG	Packaging unit
H-B	: - (, 1 ,)			
10076900	H-B 16 SDR-LB 21	-	21	5
19076900	H-B 16 SDR-LB M25	25	-	5

(22.07.2024)

©2024 Lapp Group - all rights reserved.

<http://lappkorea.lappgroup.com>

data sheet

PN 0456 / 02_03.16