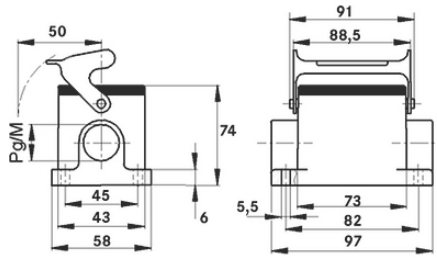
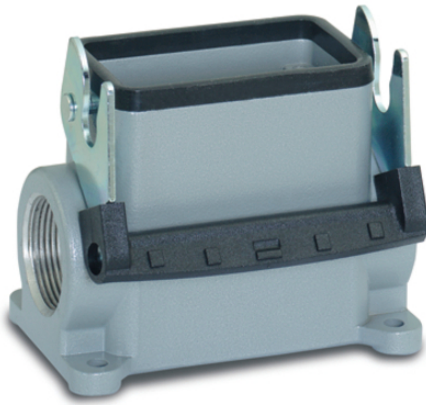


# EPIC® H-B 10 SGRH-LB

H-B.

가

UL50E



Lapp



가 가

가

(15.07.2024)

©2024 Lapp Group - all rights reserved.

<http://lappkorea.lappgroup.com>

data sheet

PN 0456 / 02\_03.16

# EPIC® H-B 10 SGRH-LB

1

ETIM 5:

ETIM 5.0 Class-ID: EC000437

ETIM 5.0 class :

ETIM 6:

ETIM 6.0 Class-ID: EC000437

ETIM 6.0 Class-Description: Housing for industrial connectors

:

: - ,

:

: NBR

가:

IP 65 (latched)

NEMA 250, UL50E: 12 (latched)

VDE- :

: VDE-REG. : B437

UL- :

UL : E75770

:

-40°C to +100°C, short-term up to +125°C

가 VAT

가 가 .

(15.07.2024)

©2024 Lapp Group - all rights reserved.

<http://lappkorea.lappgroup.com>

data sheet

PN 0456 / 02\_03.16



# EPIC® H-B 10 SGRH-LB

	Article description	M	PG	Packaging unit
H-B	: - (1 , , )			
70060200	H-B 10 SGRH-LB 21	-	21	10
70060400	H-B 10 SGRH-LB 29	-	29	10
79060200	H-B 10 SGRH-LB M25	25	-	10
79060400	H-B 10 SGRH-LB M32	32	-	10

(15.07.2024)

©2024 Lapp Group - all rights reserved.

<http://lappkorea.lappgroup.com>

data sheet

PN 0456 / 02\_03.16