

EPIC® H-B 10 SDRLH-BO

H-B.

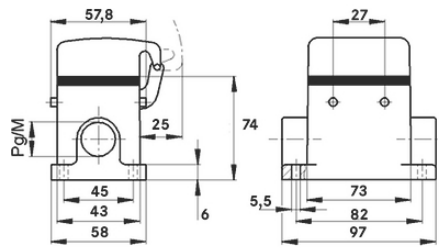
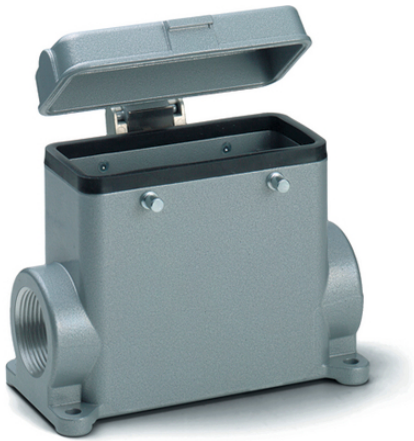
2

+125

가

2
2

가
가
UL50E



Lapp



가 가

가

(20.07.2024)

©2024 Lapp Group - all rights reserved.

<http://lappkorea.lappgroup.com>

data sheet

PN 0456 / 02_03.16

EPIC® H-B 10 SDRLH-BO

2

ETIM 5:

ETIM 5.0 Class-ID: EC000437

ETIM 5.0 class :

ETIM 6:

ETIM 6.0 Class-ID: EC000437

ETIM 6.0 Class-Description: Housing for industrial connectors

:

:

: -
:
: NBR

가:

IP 65 (latched)

IP 40 (cover closed)

NEMA 250, UL50E: 12, 4 (latched)

VDE- :

: VDE-REG. : B437

UL- :

UL : E75770

:

-40°C to +100°C, short-term up to +125°C

가 VAT 가 가 .

(20.07.2024)

©2024 Lapp Group - all rights reserved.

<http://lappkorea.lappgroup.com>

data sheet

PN 0456 / 02_03.16



EPIC® H-B 10 SDR LH-BO

| | Article description | M | Packaging unit |
|----------|----------------------|----|----------------|
| 79046200 | H-B 10 SDR LH-BO M25 | 25 | 5 |
| 79046400 | H-B 10 SDR LH-BO M32 | 32 | 5 |

(20.07.2024)

©2024 Lapp Group - all rights reserved.

<http://lappkorea.lappgroup.com>

data sheet

PN 0456 / 02_03.16