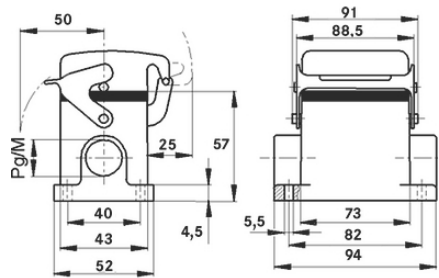
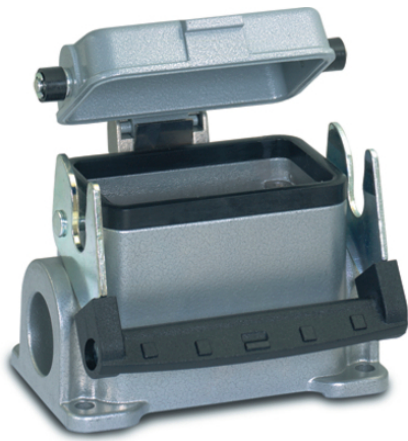


# EPIC® H-B 10 SDR-LB

H-B.

가

UL50E



Lapp



가 가

가

(20.07.2024)

©2024 Lapp Group - all rights reserved.

<http://lappkorea.lappgroup.com>

data sheet

PN 0456 / 02\_03.16

# EPIC® H-B 10 SDR-LB

- ,  
1

ETIM 5:

ETIM 5.0 Class-ID: EC000437  
ETIM 5.0 class :

ETIM 6:

ETIM 6.0 Class-ID: EC000437  
ETIM 6.0 Class-Description: Housing for industrial connectors

:

: - ,  
:  
: NBR

가:

IP 65 (latched)  
NEMA 250, UL50E: 12 (latched)

VDE- :

: VDE-REG. : B437

UL- :

UL : E75770

:

-40°C to +100°C, short-term up to +125°C

가 VAT 가 가 .

(20.07.2024)



# EPIC® H-B 10 SDR-LB

	Article description	M	PG	Packaging unit
H-B	: - ( , 1 , )			
10036900	H-B 10 SDR-LB 16	-	16	10
19036900	H-B 10 SDR-LB M20	20	-	10
79064600	H-B 10 SDR-LB M25	25	-	10

(20.07.2024)

©2024 Lapp Group - all rights reserved.

<http://lappkorea.lappgroup.com>

data sheet

PN 0456 / 02\_03.16