

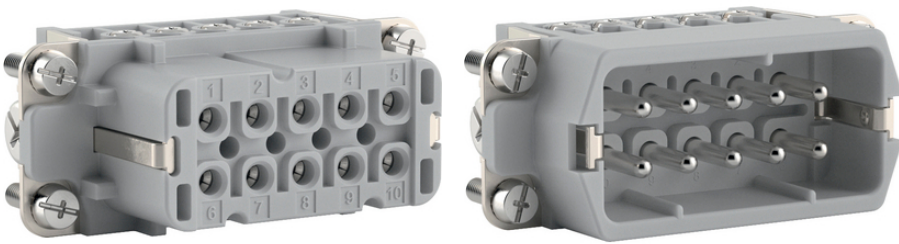
EPIC® H-A 10

400V H-A

가

400V

Made in Germany



400V

PH1

(27.07.2024)

EPIC® H-A 10

Railway applications

- Fire protection on railway vehicles: Test according EN 45545-2. Requirement sets R22 and R23. Hazard level HL1, HL2 and HL3

ETIM 5:	ETIM 5.0 Class-ID: EC000438
	ETIM 5.0 class :
ETIM 6:	ETIM 6.0 Class-ID: EC000438
	ETIM 6.0 Class-Description: Contact insert for industrial connectors
(V):	IEC: 400 V
	UL: 600 V
	CSA: 600 V
:	4 kV
(A):	IEC: 16 A
	UL: 14 A
	CSA: 16 A
:	3
:	UL94 V-0
:	1.5 - 4 mohm
:	,
/ :	10 + PE
:	: 0.5 - 2.5 mm ²
(mm):	8
:	PC,
:	500
VDE- :	: VDE-REG. : B437
	UL- :
	UL : E75770
:	-40°C ~ +120°C

가 VAT 가 가 .

(27.07.2024)



EPIC® H-A 10

	Article description	Contact type			Packaging unit
H-A 10					
10440100	H-A 10 SS		yes	1 - 10	5
10441100	H-A 10 BS		yes	1 - 10	5
10440000	H-A 10 SS		-	1 - 10	5
10441000	H-A 10 BS		-	1 - 10	5

(27.07.2024)

©2024 Lapp Group - all rights reserved.

<http://lappkorea.lappgroup.com>

data sheet

PN 0456 / 02_03.16