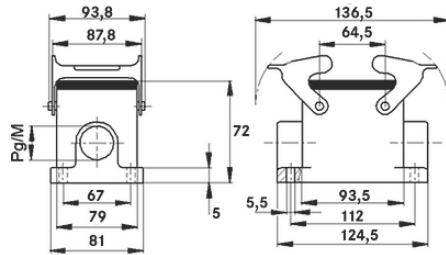
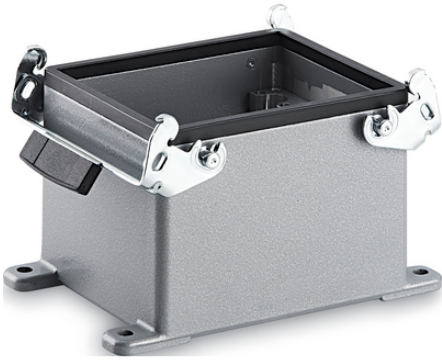


**EPIC® H-A 48 SGRL**

3 ( ),  
 2 2 가 3 가 가  
 2 H-A 48



H-A16 3가  
 M40 housing extension on M50 with SKINTOP 53112083 possible (clamping range 27 - 35 mm)

# EPIC® H-A 48 SGRL

ETIM 5:

ETIM 5.0 Class-ID: EC000437

ETIM 5.0 class :

ETIM 6:

ETIM 6.0 Class-ID: EC000437

ETIM 6.0 Class-Description: Housing for industrial connectors

:

:

:  
: NBR

가:

IP 65 (latched)

:

-40°C to +100°C, short-term up to +125°C

가 VAT 가 가 .

(22.07.2024)

©2024 Lapp Group - all rights reserved.

<http://lappkorea.lappgroup.com>

data sheet

PN 0456 / 02\_03.16



# EPIC® H-A 48 SGRL

	Article description	M	Packaging unit
H-A : - (2 , )			
19639600	H-A 48 SGRL M40	40	1