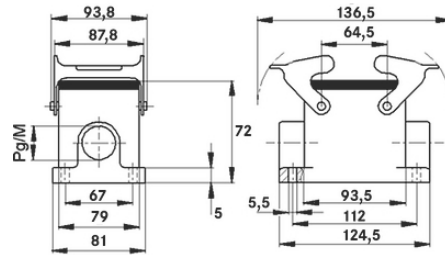
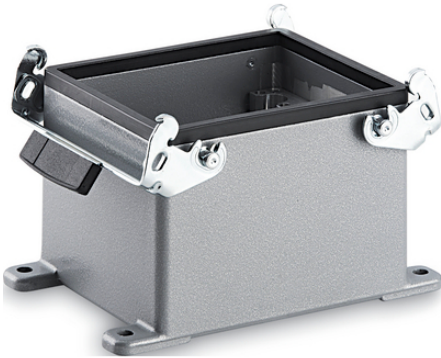


EPIC® H-A 48 SGR

3 (),

3

2 H-A 48



H-A16

3가

M40 housing extension on M50 with SKINTOP 53112083 possible (clamping range 27 - 35 mm)

EPIC® H-A 48 SGR

ETIM 5:

ETIM 5.0 Class-ID: EC000437

ETIM 5.0 class :

ETIM 6:

ETIM 6.0 Class-ID: EC000437

ETIM 6.0 Class-Description: Housing for industrial connectors

:

:

:
: NBR

가:

IP 65 (latched)

:

-40°C to +100°C, short-term up to +125°C

가 VAT 가 가 .

(13.07.2024)

©2024 Lapp Group - all rights reserved.

<http://lappkorea.lappgroup.com>

data sheet

PN 0456 / 02_03.16



EPIC® H-A 48 SGR

	Article description	M	PG	Neck	Packaging unit
H-A	: - (1 ,)				
10633800	H-A 48 SGR 29	-	29	yes	1
19638600	H-A 48 SGR M40	40	-	-	1

(13.07.2024)

©2024 Lapp Group - all rights reserved.

<http://lappkorea.lappgroup.com>

data sheet

PN 0456 / 02_03.16