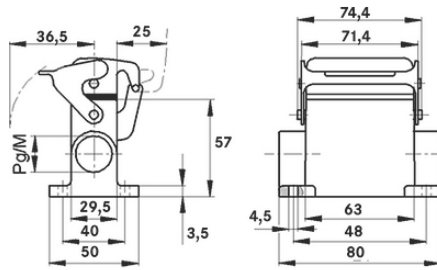
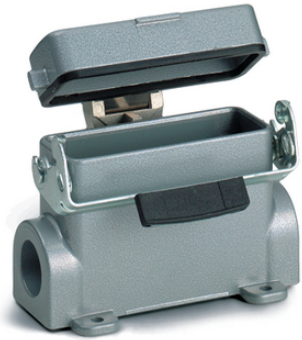


# EPIC® H-A 10 SDRL-LB

2 가

2 가  
UL50E



2

(20.07.2024)

# EPIC® H-A 10 SDRL-LB

ETIM 5:

ETIM 5.0 Class-ID: EC000437

ETIM 5.0 class :

ETIM 6:

ETIM 6.0 Class-ID: EC000437

ETIM 6.0 Class-Description: Housing for industrial connectors

:

: ,

:

: NBR

가:

IP 65 (latched)

NEMA 250, UL50E: 12, 4 (latched)

VDE- :

: VDE-REG. : B437

UL- :

UL : E75770

:

-40°C to +100°C, short-term up to +125°C

가 VAT 가 가 .

(20.07.2024)

©2024 Lapp Group - all rights reserved.

<http://lappkorea.lappgroup.com>

data sheet

PN 0456 / 02\_03.16



# EPIC® H-A 10 SDRL-LB

	Article description	M	PG	Packaging unit
H-A	: - ( , 2 , )			
70456200	H-A 10 SDRL-LB 16	-	16	5
70456400	H-A 10 SDRL-LB 21	-	21	5
79456200	H-A 10 SDRL-LB M20	20	-	5
79456400	H-A 10 SDRL-LB M25	25	-	5

(20.07.2024)

©2024 Lapp Group - all rights reserved.  
<http://lappkorea.lappgroup.com>

data sheet

PN 0456 / 02\_03.16