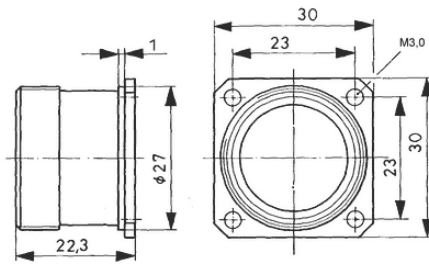


EPIC® SIGNAL R 3.0 B1

, 21- , 26- 가

EPIC® R3.0 26

Made in Germany



ETIM 5:

ETIM 5.0 Class-ID: EC002635

ETIM 5.0 class : ()

ETIM 6:

ETIM 6.0 Class-ID: EC002635

ETIM 6.0 Class : ()

(V):

24V AC / 60VDC

:

1.5 kV

(24.04.2024)

©2024 Lapp Group - all rights reserved.

<http://lappkorea.lappgroup.com>

data sheet

PN 0456 / 02_03.16



EPIC® SIGNAL R 3.0 B1

(A):	7.5 A
:	< 3 mOhm
:	,
/ :	21- / 26-
:	: 1.0 mm ²
:	: -
:	: 가
:	:
가:	IP 67 (,)
:	500
:	-40°C to +100°C, short-term up to +125°C

가

가 VAT 가 가 .

(24.04.2024)



EPIC® SIGNAL R 3.0 B1

	Article	Version					/ PU
R 3.0 B1							
00009082	SIGNAL R 3.0 B1		1 - 21	E-Part	N	M3 (4x)	5
00009135	SIGNAL R 3.0 B1		1 - 21	P-Part	N	M3 (4x)	5
00008978	SIGNAL R 3.0 B1		1 - 26	P-Part	N	M3 (4x)	5

(24.04.2024)

©2024 Lapp Group - all rights reserved.

<http://lappkorea.lappgroup.com>

data sheet

PN 0456 / 02_03.16